

1. INTRODUCTION:

Mid Day Meal Programme was introduced in 1925 for disadvantaged children in Madras Municipal Corporation, where the children are not going to the school.

By the mid 1980's Kerala, Gujarat, Tamilnadu and Pondicherry States have universalized a cooked Mid Day Meal Program for children studying at primary level and in 1990-91 twelve States also started implementing the Mid Day Meal Programme for primary level children with their own resources.

The National Program of Nutritional Support to Primary Education (NP-NSPE) was launched as a centrally sponsored scheme on 15th August 1995 in 2408 blocks in the country for enhancement of enrolment, retention, improvement of attendance and quality of education and improving of nutritional levels among children. By the year 1997-98 the NP-NSPE was introduced in all districts of the country.

The Hon'ble Supreme Court of India in its direction in 2001 has linked the feeding Programme of the children to quality education Programme of Government. This was done to ensure that lesser number of children go to school hungry. This resulted in encouraging poor families to enroll their children in Government schools and thereby enable them to guarantee at least one square meal a day, called as Mid Day Meal. All State Governments in the country have to ensure that every child coming to a Government school gets one wholesome meal for lunch on school days.

Logistically, the problem was tackled through government schools that educate 60 per cent of the country's children, most of them being from below poverty-line. With parents (often single) going for wage labour early in the morning, the children usually come to school hungry because kitchen fires at home are only late in the evenings after the father or the mother brings home the daily wage.

To address the issue, the Government of India, in its wisdom, launched the Mid Day Meal scheme, It was designed to provide nutritiously cooked afternoon meal every day to every child enrolled in a Government school. The meal not only fights hunger, it brings a hungry child's attention back to the lessons, and it also encourages out-of-school children to get enrolled so that they can at least be assured of one wholesome meal every day.

The Mid Day Meal scheme is a well-intentioned Programme. Government of India has attempted to address the fundamental problems of Health, Nutrition, Education, and overall development of children in the country by implementing the Programme all over the country. It provides children with at least one nutritionally adequate meal a day. This program is known to lead to higher attention spans, better concentration, and improved child performance. School meal program also provides parents, a strong incentive to send children to school, thereby encouraging enrollment and reducing absenteeism and dropout rates. It supports Health, Nutrition, and Education goals and consequently will have a multi-pronged impact on a nation's overall social and economic development.

There is also evidence to suggest that apart from enhancing school attendance and child nutrition, mid day meals have an important social value and foster equality. As children learn to sit together and share a common meal, one can expect erosion of **caste prejudices** and **class inequality**. Moreover, cultural traditions and social structures often mean that girls are much more affected by hunger than boys. Thus the Mid Day Meal Programme can also **reduce the gender gap** in nutrition and education, since it enhances girl child school attendance.

The contribution of mid-day meals to food security and child nutrition particularly crucial in tribal areas where hunger is endemic. School feeding Programme is a direct approach to **improve the nutritional status of the children** who are in the stage of rapid physical & psychological development requiring special nutritional requirements. The effect of Mid Day Meal Programme is that it has lowered the widespread incidence of malnutrition primarily among children of poor families and to increase their access to education.

1.1 [Brief History:](#)

Mid Day Meal Programme in undivided Andhra Pradesh and now in the separate state of Telangana.

In a significant interim order dated 28 November 2001, the Hon'ble Supreme Court issued directions pertaining to 8 food-related schemes sponsored by the Central Government. Briefly, the order directs the Union and State Governments to implement these schemes fully as per official guidelines. This, in effect, converts the benefits of these schemes into legal entitlements. The paragraph relating to mid-day meals reads as follows:-

“Cooked Mid-Day Meal is to be provided in all the Government and Government Aided Primary Schools in all the states. In states, where the scheme is not operational, it is to be started in half the districts of the state (by order of poverty)

by February 28th, 2002. By May 28, 2002, it is to be started in the rest of the districts too.”

In accordance to the Hon'ble Supreme Court of India directions in 2001, the Government of Andhra Pradesh introduced cooked Mid Day Meal Programme covers all the children studying in all Government, Local body and Government Aided Primary Schools. Subsequently it was extended to children enrolled in Education Guarantee Scheme (EGS) and Alternative & Innovative Education (AIE) Centers including, NCLP, Madarasa and Maqtaba supported under SSA. Children enrolled in all Government, Local Body, Private Aided Primary and Upper Primary schools are now provided with the nutritional support.

The Central Govt. provides support to States and Union Territories for the following components:

- 1) Food grains @ 100/150 gms (Primary / Upper Primary& NCLP) per child, to all the students studying in Government, Local Body and Government Aided schools, covered under the programme.
- 2) Cooking assistance.
- 3) Transportation cost @ Rs.750 per MT.
- 4) Honorarium to Cook cum Helpers @ Rs.1000/- P.M.
- 5) Assistance for management, monitoring and evaluation @ 2.8 per cent of components 1 to 3.

The scheme in its first year of implementation, has led to the following positive outcomes:-

- 1) Elimination of classroom hunger
- 2) Increase in enrollment, more significantly of girls
- 3) Increase in daily attendance, particularly of girls and children from poorer sections

Impact of Mid Day Meal Scheme is significant:

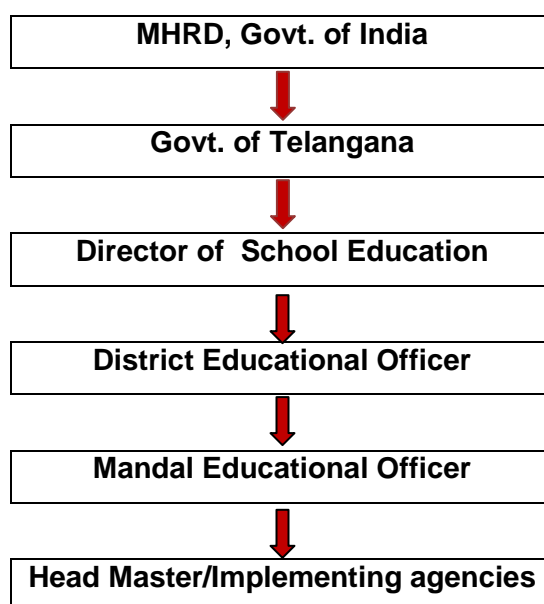
- Mid Day Meal effectively alleviates classroom hunger and persuades poor families to send their children to school.
- The scheme has increased enrolment in schools.
- The Programme has reduced dropout rate.
- It has curbed teacher absenteeism and narrowed social distances.

The scope and effectiveness of Mid Day Meal Scheme has led to increased socialization among castes, addressed Malnutrition and women employment with the impact

it has shown and the active convergence of other Departments like Health, Civil Supplies, Food Corporation of India, Sarva Shiksha Abhiyan, Rural Development, Agriculture and Revenue Departments.

1.2 Management Structure:

The Mid Day Meal Programme Management structure in Telangana is as follows:



1.3 Process of Plan Formulation at State and District Level:

The Planning process of 2019-20 in Telangana State started in April,2019. The details are as follows:

Planning Schedule

Sl. No	Activity	Level	Date
1	Orientation of District Educational Officers and Asst. Directors about Planning Process	State Level	18-04-2019
2	Orientation of Mandal Educational Officers on Planning Process.	District Level	20-04-2019
3	Organization of Head Masters of Primary, Upper Primary & High Schools	Mandal Level	22-04-2019
4	School level Planning Process meeting. Members Sarpanch, School Management Committee, Mothers Committee, Implementing Agencies & Head Master of the School as Convener	School Level / Habitation Level	23-04-2019

In Telangana State superfine rice is being served in MDM in all the schools from 1-1-2015 onwards. Joint Collectors and DEOs have informed that the children are very happy in eating superfine rice and they are now consuming more quantity also.

Finally, the zone wise meetings were held with the Assistant Directors in a phased manner from 24.04.2019 to 30.04.2019 for final presentation of the AWP&B 2019-20 as follows:

SI.No	Date	Districts
1	24-04-2019	Mahabubnagar, Nagarkurnool, Wanaparthy, Jogulamba, Hyderabad, Narayanpet
2	25-04-2019	Rangareddy, Vikarabad, Medchal, Nizamabad, Kamareddy
3	26-04-2019	Khammam, Bhadradi, Nalgonda, Suryapet, Yadadri
4	27-04-2019	Warangal Urban, Warangal (R), Mahabubabad, Jayashankar Bhupalpally, Mulugu, Jangaon
5	29-04-2019	Adilabad, Mancherial, Kumrambheem, Nirmal & Medak
6	30-04-2019	Karimnagar, Jagtial, Peddapalli, Rajanna Siricilla, Sangareddy, Siddipet

2. Description and assessment of the programme implemented in the current year (2017-18) and proposal for next year (2018-19) with reference to:

2.1 Regularity and wholesomeness of mid day meals served to children; interruptions if any and the reasons therefor problem areas for regular serving of meals and action taken to avoid interruptions in future

During the year 2018-19 the Mid Day Meal was served to school children regularly on all working days without any interruption.

The standardized menu suggested by the National Institute of Nutrition, Hyderabad and Home Science College, Agriculture University, Hyderabad were communicated to all the districts and they were allowed the flexibility to utilize locally available ingredients. Menu is flexible, with cooked rice, dal and vegetables, sambar, "Pulihora" (Tamarind rice) being generally the main menu. Egg is served thrice a week. The implementing agencies are using the seasonally available vegetables and green leaves. The wholesomeness of the meal provided is checked at random by various officials visiting schools. One Teacher from the School on rotation has been instructed to taste the Meal compulsorily to ensure its wholesomeness before it is served to the children. One member of the School Management Committee (SMC) or any parent has also been requested to visit the school and ensure the quality of meal served every day.

On receiving complaint with regard to quantity/quality on the implementing agencies, immediate suitable action is being initiated against the defaulters. All the eligible children are covered under this Programme except a small percentage who prefer home meal. Eggs are served to children thrice a week. Guidelines are issued for procuring eggs at the Village Level. National Egg Coordination Committee rates are taken as the maximum limit for eggs procurement and supply.

Caloric / Protein value of the midday meal provided along with menu prescribed

As per Government of India directions cooked meal is provided with a minimum content of 470 calories and 12 grams of protein on each working day of the school to children studying in classes I to V and 695 calories and 20 grams of protein content is provided per child on each working day of the school for classes VI to VIII. In addition, 160 calories egg is provided thrice in a week. Fool proof arrangements were made to ensure this by the State Government throughout the academic year 2018-19.

2.2 System for cooking, serving and supervising mid day meals in the schools:

The implementation of the Mid Day Meal Scheme at school level in rural areas is carried out mainly by SHGs, SMC, other agencies like NGOs with proven track record, Charitable Trusts, Parents, who are identified by the Tahsildars. Tahsildars are authorized to take action on the Agencies in case of any deviations or untoward happenings if any. In Urban areas, a committee headed by the Tahasildar identifies Community Development Societies, NGOs, Urban SHGs, DWACRA, School Management Committees and other Agencies as implementing agencies after verifying their antecedents.

The Headmaster certifies the daily attendance of the children and the quantity of rice utilized, and also maintains registers like Stock Register and issue Register under Joint Signature of cooking agency. The Head Masters also furnish Monthly Reports on the implementation of Mid Day Meal in the schools to the Mandal (Block) level and from there to the District level.

Mostly Women SHGs (invariably they are the mothers of the students) are involved in this programme. To encourage Community involvement and also to ensure proper care, cleanliness, wholesomeness etc., NGOs and other service oriented Organizations are also encouraged to take part in this endeavor.



ZPHS Odyaram, Gangadhara Mandal, Karimnagar District

The Headmaster of the school will supervise the mid day meal scheme and one teacher will be kept as incharge of MDM scheme. The following instructions are issued to all the DEOs for effective implementation of the scheme.

1. Care should be taken in cooking food in a hygienic atmosphere.
2. One teacher, one parent should taste the meal every day.
3. Every day 2 parents should come to school for observation in serving of MDM
4. Prepare roster for parents every month to visit the school to supervise MDM
5. Provide safe drinking water facility.

Cook-cum-helpers serving MDM under supervision of Teachers

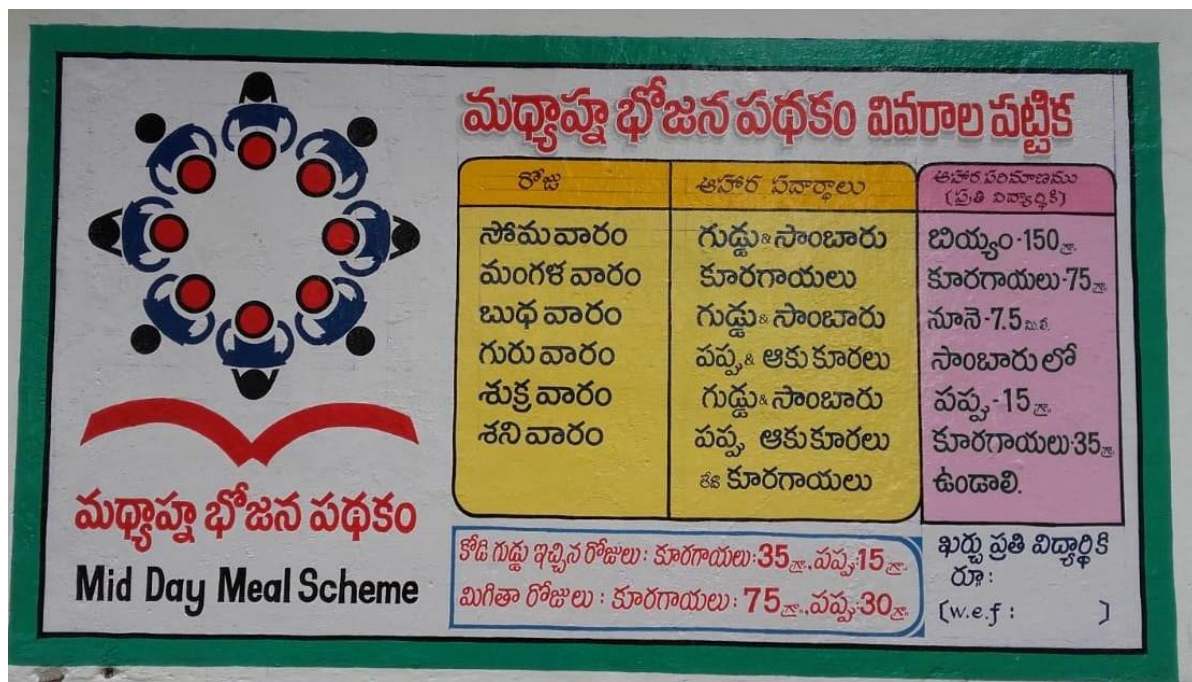


2.3 Details about weekly menu :

2.3.1 **Weekly menu – day wise:**

The menu for all days in a week is displayed at prominent place in all the schools.

PHOTO OF MENU



2.3.2 **Addl. Food items provided (fruits/milk/any other items), if any from State/UT resources. Frequency of their serving along with per unit cost per day:**

Egg is served thrice in a week .

2.3.3 **Usage of double fortified salt and Fortified Edible Oil; their availability and constraints, if any, for procuring these items.**

Instructions are issued to the implementing agencies to use double fortified salt and they are procuring the same locally.

2.3.4 **At what level menu is being decided/fixe:**

Menu is decided commonly for all schools by the Department of School Education only with an option to modifications by the local SMC.

2.3.5 **Provision of local variation in the menu, inclusion of locally available ingredients/items in the menu as per the liking/taste of the children:**

There is no variation in the Menu. Menu is served by the Implementing agencies as directed by the Government/ Department of School Education.

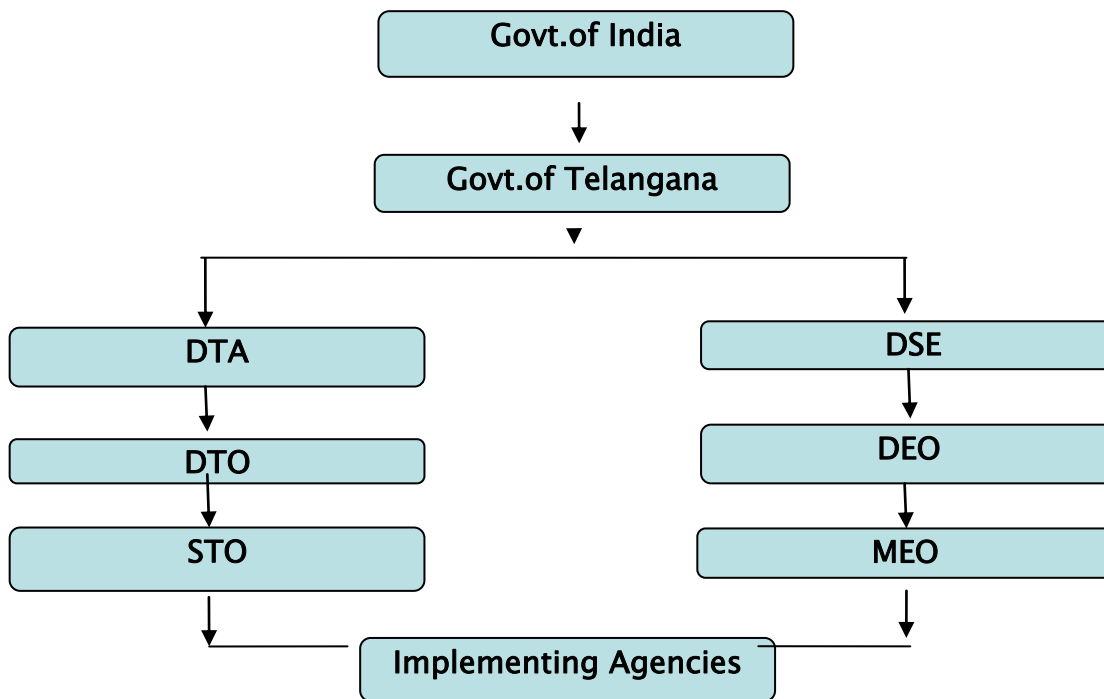
2.3.6: **Time of serving meal:**

Instructions are issued to serve Mid Day Meals between 12.30 Noon to 01:15 PM in the premises.

2.4 Fund Flow Mechanism – System for release of funds (Central Share and State share):

2.4.1 Existing mechanism for release of funds up to school/ implementing agency levels:

The system for release of funds under Mid Day Meal (Central & State) is as follows:



2.4.2 Mode of release of funds at different levels:

The State Government releases the funds to the DEOs through Treasuries and the DEOs release the required budget to the Mandals. The Head Masters (HMs) raise the bills as per meals taken in their schools to the Mandal Educational Officers (MEO). The MEOs after scrutinizing the claims, release the amount to the agencies through Treasury. Entire transfer of funds from state to school level takes place through Treasuries and from Sub-Treasury to School/Agency accounts through e-transfer.

2.4.3 Dates when the fund was released to State Authority / Directorate / District / Block / Gram Panchayat and finally to the Cooking Agency / School:

S.No	State Govt.	Directorate	District	Block/ Mandal	School/Cooking agencies
1	23-06-2018	28-06-2018	04-07-2018	04-04-2018	

2	04-10-2018	10-10-2018	15-10-2018	18-10-2018	School/Cooking agencies are paid by 10 th of every month
3	16-01-2019	19-01-2019	22-01-2019	25-01-2019	

2.4.4 Reasons for delay in release of funds at different levels:

There is occasional delay in release of funds due to administrative reasons, but care is being taken to release and credit funds to the Agencies in time.

2.4.5 In case of delay in release of funds from State/Districts, how the scheme has been implemented by schools/implementing agencies:

The implementing agencies are born the expenditure and supplying Mid Day Meal to the students in case of delay in release of funds.

2.4.6 Initiatives taken by the State for pre-positioning of funds with the implementing agencies in the beginning of the year:

The budget is being released regularly as and when the budget was received from the Govt. of India.

2.5 Food grains management:

2.5.1 Timelines for lifting of food grains from FCI Depot – District wise lifting calendar of food grains:

The Dist. Supply Office lifts the food grains from the FCI to the Dist. Godowns and then supplying Super Fine rice from Dist. Godowns to MLS point to the School point monthly once.

2.5.2: System for ensuring lifting of FAQ food grains (Joint Inspections at the time of lifting etc):

The HM of the school with the assistance of another teacher weighs the Rice bags as per allotment and ensure whether it is correct or not and keep the stock in the store room.

2.5.3 Is there any incident when FAQ food grain was not provided by FCI. If so, the action taken by the State/District to get such food grain replaced with FAQ food grain. How the food grain of FAQ was provided to implementing agencies till replacement of inferior quality of food grain from FCI was arranged.:

There are no such incidents.

2.5.4 System for transportation and distribution of food grains:

The food grains are being transported from District godowns to MLS points and from the MLS points to School Point as per indent.

2.5.5 Whether unspent balance of food grains with the schools is adjusted from the allocation of the respective implementing agencies (Schools/ SHGs/Centralized Kitchens) Number of implementing agencies receiving food grains at doorstep level.

From 01-01-2015 onwards, as per the policy of the state government, the Dist. Administration have made arrangements route-wise to supply the superfine rice from Mandal Level Supply (MLS) point in a separate vehicle to the school point.

2.5.6 Storage facility at different levels in the State/District/Blocks/Implementing agencies after lifting of food grains from FCI dept:

Yes, Indents are placed based on the requirement and the opening balance available.

2.5.7: Challenges faced and plan to overcome them:

From 01-01-2015, the superfine rice is being supplied at the doorstep of all the schools in the State.

Where there are no store rooms, possibilities are being explored to convert addl. Class rooms in excess into kitchen shed cum store room by making required alterations.

The food grains required for the MDM programme are allocated by Govt. of India through Food Corporation of India. The distribution of the food grains has been decentralized and the District Educational Officers are nominated as Nodal Officers at District level to execute all the issues pertaining to lifting, ensuring quality of food grains, payment of cost of food grains and submission of monthly reports.

Govt. of India have allocated the food grains for all the four quarters of 2018-19 for Primary, Upper Primary (including NCLP centers) as follows:

SI.No	Quarter	Quantity allocated in MTs		Quantity Lifted in MTs	
		Primary	Upper Primary (incl NCLP)	Primary	Upper Primary (incl NCLP)
1.	1 st Quarter	3565.00	3440.64	41266.05	
2.	2 nd Quarter	7015.00	6703.14		
3.	3 rd Quarter	5684.97	4620.86		
4.	4 th Quarter	5684.97	4620.86		
5.	O/B	2597.56	3393.41		
TOTAL		24547.50	22778.91		

2.6 Payment of cost of food grains to FCI:

2.6.1 System for payment of cost of food grains to FCI; whether payments made at district level or State level:

Under MDM food grain charges budget is being released from the State to the Districts. District units of the FCI submitting bills to the District Educational Officers (DEOs) quarterly basis. Accordingly, the District Educational Officer is making payments to the Area manager of the FCI of the concerned districts as per the rates fixed by the state Government.

2.6.2 Status of pending bills of FCI of the previous year(s) and the reasons for pendency:

Budget released to clear the bills up to March, 2019.

2.6.3 Timelines for liquidating the pending bills of previous year(s).

There are no pending bills of previous years.

2.6.4 Whether meetings are held regularly in the last week of the month by the District Nodal Officers with FCI as per guidelines dated 10.02.2010 to resolve the issues relating to lifting quality of food grains and payment of the bills:

The meetings are being conducted at District Level under the Chairmanship of Joint Collector who is the Collector of Civil Supplies and reviewing the issues regarding the lifting quality of food grains and payment of the bills.

2.6.5 Whether the District Nodal Officers are submitting the report of such meeting to State Head Quarter by 7th of next month:

The meetings are being conducted regularly and if any issues are there they are submitting their reports.

2.6.6. The process of reconciliation of payment with the concerned offices of FCI:

There is no difference of amount as per the bills of the FCI and payment made by the department.

2.6.7: Relevant issues regarding payment to FCI:

There are no issues except delay in certain cases due to delay in the process of release of budget.

2.6.8: Whether there is any delay in payment of cost of food grains to FCI. If so, the steps taken to overcome the delay:

There is no delay in payment of cost of food grains to the FCI

2.7 Cook-cum-Helpers (CCHs) :-

2.7.1 Whether the State follows the norms prescribed by MHRD for the engagement of cook-cum-helpers or it has its own norms:

The State of Telangana is following the norms prescribed by MHRD for the engagement of cook-cum-helpers.

2.7.2 In case, the State follows different norms, the details of norms follows may be indicated:

Does not arise.

2.7.3 Is there any difference in the number of cook-cum-helpers eligible for engagement as per norms and the CCH actually engaged:

Sufficient no. of Cook cum helpers are engaged.

2.7.4: System and mode of payment of honorarium, hon. to cook – cum helpers and implementing agencies viz. NGOs/SHGs/Trust/Centralized kitchens etc:

Funds are released from the State to the DEOs and the DEOs release the budget to the Mandals. The HMs submit bills to the Mandal. The MEOs submit bills in the Sub Treasuries and the amount of honorarium is paid to the Cook cum helper to their bank account.

2.7.5 Whether the CCH were paid monthly basis:

Yes

2.7.6 Whether there was any instance regarding irregular payment of honorarium to cook-cum-helpers and reason thereof. Measures taken to rectify the problem:

Does not arise

2.7.7 Rate of honorarium to cook-cum helpers:

Each cook cum helper is paid Rs 1000/- per month

2.7.8: No .of cook cum helpers having bank accounts:

All the CCHs are having bank accounts. No one is paid honorarium in cash.

2.7.9: Number of cook-cum-helpers receiving honorarium through their bank accounts:

Payment is being made to Cook-cum-helpers through their bank accounts only and no cash transactions are made.

2.7.10 : Provisions for health checkups of cook cum helpers:

Local doctors while examining the students are also conducting health checks of cook cum helpers.

2.7.11 Whether cook-cum-helpers are wearing head gears and gloves at the time of cooking of meals

Instructions are issued to all the DEOs to issue necessary instructions to all the Head Masters to see that cook-cum-helpers take all precautionary measures to prepare food in a safe manner, in hygienic atmosphere including wearing head gears and gloves at the time of cooking meals and keep the surroundings clean and tidy.

2.7.12 Modalities for appointment of cook-cum-helpers engaged at school level and working at centralized kitchens, in case of schools being served through centralized kitchens :

There are (2) Non Governmental Organizations serving MDM in 4 districts i.e. Hyderabad, Ranga Reddy, Medchal and Sangareddy districts covering 1460 schools.

Centralized Kitchen		NGO		Trust	
No. of centralized Kitchen	No. of schools covered	No. of NGO working	No. of schools covered	No. of Trust working	No. of schools covered
2	1460	1	508	1	952

Bills are claimed by the MEO as per the bills submitted by the HMs.

The Government of Telangana is placing required funds readily available at the beginning of the year itself even before the Government of India releases their share.

2.7.13 : Mechanisms adopted for the training of cook-cum-helpers. Total number of trained cook cum helpers engaged in the cooking of MDMs. Details of the training modules; Number of Master Trainers available in the State; Number of trainings organized by the Master Trainers for training cook-cum-helpers.

The Cook-cum-helpers training programme in Telangana State has been conducted with the collaboration of UNICEF. Training was given to 25721 cook-cum-helpers in the State in three spells. The video films to cook-cum-helpers, Children and Administrators have been supplied to 27500 schools.

2.7.14 : Whether any steps have been taken to enroll cook-cum-helpers under any social security schemes, i.e. Pradhan Mantri Jan Dhan Yojana. Pradhan Mantri

Suraksha Bima Yojana, Pradhan Mantri Jeevan Jyoti Bima Yojana etc. and number of cooks benefitted through the same:

Not commenced so far.

2.8 Procurement and storage of cooking ingredients and condiments:

2.8.1 System for procuring (good quality Agmark/FPO) pulses, vegetables including leafy ones, salt, condiments, etc and other commodities, oil etc. and other commodities:

There are no procurements at state, district and Mandal levels. Instructions are issued to procure good quality (FSSAI) fresh pulses, vegetables including leafy ones, salt, condiments, etc and other commodities from local market.

2.8.2 Whether First In First Out (FIFO) method has been adopted for using MDM ingredients such as pulses, oil/fats, condiments salt etc. or not:

Instructions are issued to use fresh pulses and not to use old stock of pulses and condiments.

2.8.3 Arrangements for safe storage of ingredients and condiments in kitchens:

Instructions are issued to the Head Masters through the DEOs to see that the Implementing agencies store the ingredients and condiments in Iron boxes duly locked and are not accessible to the rats, other stray animals and children.

2.8.4 Steps taken to ensure implementation of guidelines dated 13.02.2015 on food safety and hygiene in school level kitchens under MidDay Meal Scheme:

Instructions are issued to all the Headmasters to the District Educational Officers to maintain food safety and hygiene in school level kitchens under Mid Day Meal Scheme.

2.8.5 Information regarding dissemination of the guidelines up-to school level:

No discrimination in schools in serving Mid Day Meals.

2.9 Type of Fuel used for cooking of Mid Day Meals – LPG, smokeless chulha, firewood etc.,:

The instructions have been issued to all the DEOs to see that the Mid Day Meal should be prepared by using LPG stoves and smokeless chulha. In remote villages the MDM is being prepared by using firewood due to non availability of LPG.

2.9.1 Number of schools using LPG for cooking MDM: In 3956 schools the Implementing Agencies are using LPG and in 1460 schools the NGOs are serving MDM through Centralized Kitchens.

2.9.2 Steps taken by State to provide LPG as fuel in MDM in all schools: The Government of Telangana has addressed the Government of India for relaxation on ceiling for supply of cylinders under Mid Day Meal Scheme with domestic price and also providing additional budget for purchase of gas stoves and connections.

2.9.3 Expected date by which LPG would be provided in all schools:

2.10 kitchen-cum-store

2.10.1 Procedure and Status of construction of kitchen-cum-store:

Kitchen sheds are sanctioned to all schools whose strength is above 20 students. The construction work is entrusted to the Panchayat Raj and Rural Development Department in respect of rural areas and to TSEWIDC in respect of urban areas.

2.10.2 Whether any standardized model of kitchen cum stores is used for construction:

The model communicated by the Engineering wing of SSA has been communicated to all the District Educational Officers to take further action in the matter.

2.10.3: Details of the construction agency and role of community in this work:

Kitchen sheds are sanctioned to all schools whose strength is above 20 students. The construction work is entrusted to the Panchayat Raj and Rural Development Department in respect of rural areas and to SSA in respect of urban areas. There are no local contributions for completion of construction.

2.10.4 Kitchen cum stores constructed through convergence, if any:

The Panchayat Raj and Rural Development has given assurance for construction of kitchen cum stores rooms in 7080 rural areas schools along with 194 model schools in convergence with MGNREGS funds.

2.10.5 Progress of construction of kitchen cum stores during this year and target for the next year.

The Commissioner, Panchayat Raj and Rural Development Department, Hyderabad has agreed to provide financial assistance in convergence with MGNREGS in the ratio of 55% and 45% for construction of 7274 kitchen-cum-stores with unit cost of Rs. 2 lakhs for 6171 schools (21 to 200 strength) and Rs. 2.5 lakhs for 1103 schools (201 and above strength).

Department share : 55% (Rs. 80.38 Cr.) and MGNREGS share : 45% (Rs. 65.77 Cr.)

2.10.6 The reasons for slow pace of construction kitchen cum stores if applicable:

The unit cost for construction of kitchen-cum-store room is insufficient as worked out by the SSA-Engineering wing and it is decided that the additional fund component can be met as Labour Component under MGNREGS at the District Level. Government has approved the unit cost for Rs. 2.5 lakhs.

2.10.7 How much interest has been earned on the unutilized central assistance lying in the bank account of the State/ Implementing agencies:

2.10.8 Details of the kitchen cum stores constructed in convergence. Details of the agency engaged for the construction of these kitchen cum stores.

- In RURAL areas total 7080 schools were sanctioned to construct kitchen-cum-stores with 55% share from School Education Department i.e. Rs. 8037.97 lakhs and 45% share under MGNREGS programme. i.e. Rs. 6576.53 lakhs.
- Also sanctioned kitchen-cum-stores in 194 Model schools with 55% Share from school Education Department i.e. Rs. 266.75 lakhs and 45% share from MGNREGS i.e., Rs. 218.25 lakhs.
- The above works are being executed by the Rural Development Department.
- Sanctioned kitchen-cum-stores in 400 schools in Urban areas with Rs. 920.00 lakhs (100% share) from School Education Department and the works are being executed by TSEWIDC.

Sl.No	Area	No. of Schools	Amount (In lakhs.)		
			School Education Share	MGNREGS Share	TOTAL
1	RURAL	7080	8037.97	6576.53	14614.50
2	URBAN	400	920.00	-	920.00
3	MODEL Schools	194	266.75	218.25	485.00

The construction of kitchen-cum-stores have been completed in 17,483 schools and the construction is under progress in 3698 schools.

2.11 Kitchen devices:

2.11.1 Procedure of procurement of kitchen devices from funds released under the Mid Day Meal Programme:

2.11.2 Status of procurement of kitchen devices:

2.11.3 Procurement of kitchen devices through convergence or community/CSR: NIL

2.11.4 Availability of eating plates, source of procurement of eating plates.

Plates are being donated by the local politicians, philanthropists, old students and other donors. In majority of schools plates are stored in schools. However in some schools the plates are taken by the children to their home and bringing daily for MDM purpose.

2.12 Measures taken to rectify:

2.12.1. Inter-district low and uneven utilization of food grains and cooking cost:

No such cases in the State.

- I. The allocations received from Govt. of India are being distributed to the districts taking into account number of children opted MDM, monthly average and number of working days in a month. The allocations are made separately for Primary & Upper Primary Schools.
- II. Cooking cost is released to district, month wise allocations, by State authorities basing on actual requirements. Amount is drawn based on actual number of meals served in a month as certified by Head Master and as attested by Mandal level officers. Advance payments are not released to cooking agencies.

2.12.2 Intra-district mismatch in utilization of food grains and cooking cost:

No such cases in the State.

District administration is allocating and restricting lifting of foodgrains on the basis of monthly / fortnightly reports of Mandal level officers. Accordingly, a watch is kept on the amounts released as cooking cost based on attendance registers and stock registers maintained at school level.

2.12.3 Mismatch of data reported through various sources (QPR, AWP& B, MIS etc)

Instructions have been issued to all the DEOs to rectify and to reconcile the data entered into MIS. Follow up action is being taken to rectify the discrepancies.

2.13 Quality of food:

2.13.1.System of tasting of food by teachers/community, maintenance of tasting register at school level:

The Teacher who is designated for monitoring MDM scheme (on rotation basis) taste the food before serving. Instructions were also issued that all inspecting officers must taste food at the time of their visit to the schools. In all the schools the HMs/Teachers are tasting MDM every day and recording in registers.

All the District Educational Officers, Mandal Educational Officers and Head Master were requested to avoid open air cooking, to keep Cooking place away from classrooms, totally avoid serving meals from cooking point, hand washing, etc., In all the schools the HMs and Teachers are supervising the hand washing of children with soap before and after meals.

All the Joint collectors were also requested for effective implementation for monitoring MDM by taking every care for supply of clean and nutritious food to children.

Students washing hands before Meal



Additional Director of School Education is monitoring and tasting the food cooked under Mid Day Meals



2.13.2 Maintenance of roster of parents, community for the presence of at least two parents in the school on each day at the time of serving and tasting of mid day meal:

Instructions have been issued to all the District Educational Officers to see that Every day 2 parents should come to school for observation in serving of MDM, Prepare roster for parents every month to visit the school to supervise MDM and one teacher and one parent should taste the meal every day before serving the MDM to the students

2.13.3 Testing of food sample by any recognized labs for prescribed nutrients and presence of contaminants such as microbes, e-coli. Mechanism to check the temperature of the cooked MDM.

Food samples are being tested

2.13.4 Engagement of recognized labs for the testing of meals:

The Akshayapatra Foundation has engaged Vimta Labs Limited for testing of food samples under Mid Day Meal Scheme. The MANNA Trust has engaged Care Labs, Hyderabad for testing the food samples.

2.13.5 Details of protocol for testing of Meals, frequency of lifting and testing of samples:

For testing of food samples of Mid Day Meal one lab namely National Collateral Management Services Ltd. Hyderabad has been selected for testing the two parameters a) Nutritional b) Microbiological contents.

2.13.6 Details of samples taken for testing and the results there of:

The samples are sent by the NGOs/ Trust during 2018-19. The samples are tested by the labs and reported that they are as per norms.

2.13.7 Steps taken to ensure implementation for guidelines issued with regard to quality of food:

Instructions were issued to all the Headmasters to maintain quality, food safety and hygiene. The training was given to all the CCHs on preparation of Mid Day Meals.

2.14 Involvement of NGOs/ Trusts/ Temples/ Gurudwara/ Jails etc :

2.14.1 Modalities for engagement of NGOs/Trusts for serving of MDM through centralized kitchen:

The Government of India has issued revised guideless for engagement of NGOs/ Trust/ Temples/ Gurudwara/ Jails etc., for serving of MDM through Centralized Kitchens.

The NGO-wise and district-wise no. of schools covered and CCHs engaged by the NGOs and at school point are as follows:

Sl.No.	District	Name of the NGO	No. of NGO working	No. of children covered
1	RANGAREDDY	Manna Trust	1	8853
2	HYDERABAD	Manna Trust		130308
3	MEDCHAL	Manna Trust		2475
4	SANGAREDDY	Akshaya Patra	1	47523
TOTAL			2	1,89,159

Akshayapatra Foundation:



2.14.2 Whether NGOs/Trusts/ Temples/ Gurudwaras/ Jails etc., are serving meal in rural areas:

Yes in 4 rural mandals in Sangareddy District .

2.14.3 Maximum distance and time taken for delivery of food from centralized kitchen and school:

Maximum 72 Kms in Sangareddy District and maximum time 2 hours. The Akshaya Patra Foundation has submitted that, they are ready to set-up Cluster Kitchens to serve Mid Day Meals in 20 kms radius to serve the school children as per the guidelines of Govt. of India” and requested to permit to continue the serving of MDM in (11) mandals in the district. Action is being taken to see that the NGOs establish cluster kitchens.

Maximum distance 30 kms., Maximum time 1 hr 30 mins (90 min) taken by Manna Trust for supply of MDM in the twin cities.

2.14.4 Measures taken to ensure delivery of hot cooked meals to schools:

The NGOs are arranging vehicles route wise to supply cooked hot food within half an hour to all the schools in the route. The Manna Trust has been instructed to supply the cooked food in heat proof stainless steel containers at the school point between 09.30 am to 12.00 pm.

2.14.5 Responsibility of receiving cooked meals at the schools from the centralized kitchen:

One teacher kept in charge for serving MDM receives the cooked meals at the schools when the same is transported by the agency through transport in the afternoon. With the help of CCH , the MDM is served to the children.

Cooking process in Akshayapatra Foundation:





2.14.6 Whether the sealed / insulated containers are used for supply of meals to schools:

The NGOs serving MDM through Centralized Kitchen are supplying the cooked food in Heat proof Stainless steel containers at the school point.

2.14.7 Tentative time of delivery of meals at schools from centralized kitchen.

Except in Medak district where they are taking nearly 2 hours travel to supply the cooked food in Hyderabad and Rangareddy district the food is supplied at lunch time only without delay.

2.14.8 Availability of weighing machines for weighing the cooked MDM at school level prepared at centralized kitchen:

2.14.9 Testing of food samples at centralized kitchens:

Akshya Patra foundation is sending food samples to the reputed labs for checking the quality and nutrition content. The Manna Trust Foundation is sending the food samples to the reputed labs for checking the quality and nutrition content.

2.14.10 Whether NGO / Temple/ Gurudwara/ Jail etc.,is receiving grant from other organizations for the Mid day meal. If so, the details thereof:

The NGOs / Trust are not collecting any donations specifically for Mid Day Meal Scheme and they collecting donations on behalf of the trusts.

2.15. Systems to ensure transparency, accountability and openness in all aspects of programme implementation:

- (1) Funds are released to the cooking agencies, CCH and FCI etc., through online.
- (2) All the particulars pertaining to the implementation of MDM are available in the Department Web Portal @ cdse.telangana.gov.in
- (3) Social Audit is Completed in 10 districts @ 6 schools per district during 2017-18.
- (4) To lodge complaints relating to MDM, separate land line phone is installed in the DEOs offices to initiate corrective measures for effective implementation of MDM.
- (5) Web based child help line toll free number 1800-425-3525 is functioning at state level in SSA to receive problems being faced by the children. As soon as call is received message is sent to the MEO under intimation to the district officers to solve the problem and submit action taken report through online within a week.

2.15.1 Display of logo, entitlement of children and other information at a prominent visible place in school:

Instructions have been issued to display MDM logo and Day wise menu at prominent places preferably on the Notice board in all the schools and the same is being followed by almost all the schools in the state.

2.15.2 Dissimilation of information through MDM website:

Instructions have been issued to the DEOs to enter the accurate data in the website promptly. Till March, 2018, the information pertaining to all the schools have been updated in the MIS portal.

2.15.3 Provisions for community monitoring at school level i.e. Mother Register, Inspection Register:

The SMCs are involving in monitoring of MDM in the schools. Village elders and youth are also helping the HM and implementing agencies in serving MDM. The departmental officers are entering the details in the Inspection register during visits to the school at the time of serving MDM. Instructions are issued to the DEOs to inform the HMs to maintain a register at school point to show the details of the SMCs and the villagers monitoring MDM.

2.15.4 Tasting of Meals by community member.

The representatives of SMC along with Teacher are testing cooked food before serving to the children. The participation of community members in this regard is not as expected. Efforts are being made to improve the participation.

2.15.5 Conducting Social Audit:

2.15.5.1 Whether Social Audit has been carried out or not : Yes, the Social Audit has been conducted during the year 2017-18 @ 6 schools in each district in respect of the following 10 districts. The Social Audit was completed up to March, 2018.

- 1) Adilabad
- 2) Hyderabad
- 3) Jagtial
- 4) Jayashankar
- 5) Jogulamba
- 6) Kumrambheem
- 7) Sangareddy
- 8) Suryapet
- 9) Vikarabad
- 10) Yadadri

2.15.5.2 If no, in 2.15.5.1, reasons thereof. : Does not arise.

2.15.5.3 Details of action taken by the State on the findings of Social Audit:

During Social Audit it is observed that an amount of Rs. 2,85,308/- has been paid in excess under cooking cost. The same has been recovered from the concerned Head Masters through the District Educational Officers.

2.15.5.4 Impact of Social Audit in the schools: The Social Audit has given the following suggestions:

- i) All the records pertaining to the MDM Scheme should be maintained properly.
- ii) All payments covering cooking cost should be made in a timely manner.
- iii) Creation of awareness among the SMCs, parents and children.
- iv) Hygienic conditions should be maintained.

v) Quality of food grains must be improved.

The above suggestions have been communicated to all the District Educational Officers in the State for effective implementation of the Scheme.

2.15.5.5 Action plan for Social Audit during 2019.20 : The Social Audit will be taken up in another 10 districts of remaining left over districts.

2.16. Capacity building and training for different stakeholders:

2.16.1. Details of the training programme conducted for State level officials, SMC members, school teachers and others stakeholders:

Posters depicting the cleanliness practices to be followed while cooking and serving Mid Day Meals were developed and supplied to schools. Further, a book containing Standard Operating Procedure (SOPs) on preparation and serving of MDM was developed and supplied to districts for use in training sessions to cooking agencies.

2.16.2. Details about modules used for training, master trainers, venues etc :

Modules on SOPs have been prepared and supplied to all the Districts for conducting training to the SHGs, cook cum helpers and all other persons who are associated with the MDM programme.

2.16.3. Targets for the next year:

It is planned that all the SHGs and cook cum helpers are given training to prepare meals without losing nutrients.

2.17. Management Information System at School, Village / Gram Panchayat, Block, District and State level and its details:

2.17.1. Procedure followed for data entry into MDM-MIS Web portal :

In the beginning of the academic year at Mandal level, the details of school strength particulars and the facilities available at school point are entered. In the monthly report, details of meals taken, rice consumption and details of SHG etc are entered. At district level, the Mandal level details are consolidated and technical problems if any are solved. The data furnished by the DEOs are consolidated at the state level.

2.17.2. Level (State/District/Block/School) at which point data entry is made:

Entry is made at Mandal/Block, District and State levels.

2.17.3. Availability of manpower for web based MIS:

There are no separate operators for MDM at mandal level to make entry of web based data. At present the operator provided by the SSA are attending to the MDM related work at mandal level. However, One operator is there to attend MDM related work at District level. One computer operator is engaged in Directorate to attend MDM related work.

2.17.4. Mechanism for ensuring timely data entry and quality of data:

At state level, the details furnished by the Districts are verified daily and information is given to all the DEOs in respect of whom the data of MIS, monthly reports and quarterly progress report are not received to update the information of their districts. Who in turn inform the MEOs to update the information and after getting information from all mandals the DEO update the information of the district. Based on which the reports are prepared and submitted to the State Govt and GOI.

2.17.5. Whether MIS data is being used for monitoring purpose and details thereof:

Yes, the data is being used for monitoring purpose. Report is taken to know whether all the schools are implementing MDM or not, Whether the students taking meals increasing or decreasing and reasons for the same, whether payments are being made regularly or not, whether any untoward incidences taken place and action taken against the persons responsible, whether any problem in feeding the data on line, and in such cases to contact the NIC for rectification of the same etc.

Govt. of India have launched the Web portal for monitoring the Mid day Meal Scheme on real time basis. A training programme for all the Assistant Directors, Superintendents and Data entry operators dealing with MDM scheme of the districts for entering data into MIS portal was conducted at NIC, Hyderabad.

The status of MIS data entry is shown below:

Name of District	Total Institutions	No. of Inst. For which Annual data entry completed	No. of Inst. For which Monthly data entry completed											
			Apr, 2018	May	Jun	Jul	Aug	Sep	Oct	Nov	Dec, 2018	Jan, 2019	Feb, 2019	Mar, 2019
2	3	4	5	6	7	8	9	10	11	12	13	11	12	13
ADILABAD	1195	1141	1141	1141	1141	1141	1141	1141	1141	1141	1141	1141	1141	1141
BHADRADRI	1324	1356	1356	1356	1356	1356	1356	1356	1356	1356	1356	1356	1356	1356
HYDERABAD	959	858	858	858	858	858	858	858	858	858	858	858	858	858
JAGTIAL	805	803	799	799	799	799	799	799	799	799	799	799	799	799
JANGAON	557	552	548	548	548	548	548	548	548	548	548	548	548	548
JAYASHANKAR	899	925	919	919	919	919	919	919	919	919	919	919	919	918
JOGULAMBA	466	465	463	463	463	463	463	463	463	463	463	463	463	463
KAMAREDDY	1030	1024	1018	1018	1018	1018	1018	1018	1018	1018	1018	1018	1018	1018
KARIMNAGAR	685	660	655	655	655	655	655	655	655	655	655	655	655	655

KHAMMAM	1259	1294	1293	1293	1293	1293	1293	1293	1293	1293	1293	1293	1293	1290
KOMARAM BHEEM	1068	1030	1010	1010	1010	1010	1010	1010	1010	1010	1010	1010	1010	1010
MAHABUBABAD	1019	944	941	941	941	941	941	941	941	941	941	941	941	933
MAHBUBNAGAR	1437	1338	1338	1338	1338	1338	1338	1338	1338	1338	1338	1338	1338	1338
MANCHERIAL	788	771	768	768	768	768	768	768	768	768	768	768	768	768
MEDAK	910	898	898	898	898	898	898	898	898	898	898	898	898	894
MEDCHAL MALKAJIRI	529	520	520	520	520	520	520	520	520	520	520	520	520	520
NAGARKURNOOL	878	862	862	862	862	862	862	862	862	862	862	862	862	826
NALGONDA	1573	1452	1452	1452	1452	1452	1452	1452	1452	1452	1452	1452	1452	1452
NIRMAL	785	774	772	772	772	772	772	772	772	772	772	772	772	772
NIZAMABAD	1214	1186	1186	1186	1186	1186	1186	1186	1186	1186	1186	1186	1186	1186
PEDDAPALLI	567	591	587	587	587	587	587	585	585	585	585	585	585	585
RAJANNA	500	499	499	499	499	499	499	499	499	499	499	499	499	499
RANGAREDDY	1356	1273	1273	1273	1273	1273	1273	1273	1273	1273	1273	1273	1273	1273
SANGAREDDY	1288	1284	1284	1284	1284	1284	1284	1284	1284	1284	1284	1284	1284	1284
SIDDIPET	994	998	998	998	998	998	998	998	998	998	998	998	998	998
SURYAPET	983	989	989	989	989	989	989	989	989	989	989	989	989	986
VIKARABAD	1057	1051	1050	1050	1050	1050	1050	1050	1050	1050	1050	1050	1050	1040
WANAPARTHY	526	523	523	523	523	523	523	523	523	523	523	523	523	521
WARANGAL RURAL	697	723	723	723	723	723	723	723	723	723	723	723	723	723
WARANGAL URBAN	573	508	508	508	508	508	508	508	508	508	508	508	508	508
YADADRI	702	728	725	725	725	725	725	725	725	725	725	725	725	725
	28623	28020	27956	27956	27956	27956	27956	27954	27954	27954	27954	27954	27954	27887

Instructions are issued to all the District Educational Officers in the State to update the data pertaining to meals taken online by all the Mandal Educational Officers before claiming the bills.

2.18. Automated Monitoring System (AMS) at School, Block, District and State level and its details:

2.18.1 Status of implementation of AMS:

The Automated Reporting System was started in the State of Telangana w.e.f. 30.1.2017.

2.18.2 Mode of collection of data under AMS(SMS/IVRS/Mobile App/ Web enabled):

Mode of collection of data under AMS is by way of SMS

2.18.3 Tentative unit cost for collection of data:

The software developed by the NIC authorities of Himachal Pradesh is being utilized with an amount of Rs.2,33,299/-

2.18.4 Mechanism for ensuring timely submission of information by schools:

The Instructions are being issued to D.E.Os and M.E.Os from time to time to ensure the data entry.

2.18.5 Whether the information under AMS is got validated:

The information in respect of 31 districts has been got validated.

2.18.6 Whether AMS data is being used for monitoring purpose and details thereof:

The data will be used for monitoring system after validation of the data all the schools in the State.

2.18.7 In case, AMS has not been rolled out, the reasons therefor may be indicated along with the time lines by which it would be rolled out:

Automated Monitoring System is being implemented in all the schools in Telangana State.

2.19. Details of Evaluation studies conducted by State/UTs and summary of its findings:

In the working group report for the 12th plan, the MHRD proposed to take up Social Audit in MDM Scheme as pilot in the State. Society for Social Audit Accountability and Transparency (SSAAT).

The Social Audit was taken up by SSAAT in the month of Feb, 2018 by covering 6 schools in each district for 10 districts and the report is awaited.

JOINT REVIEW MISSION OBSERVATIONS AND RECOMMENDATIONS:

- (i) The Head Masters may be instructed to record the height and weight of Children on quarterly basis in a regular feature.
- (ii) The following revised menu as recommended by the JRM may be communicated.

Day 1: Rice + Egg + Vegetable curry
Day 2: Rice + Dhal with leafy vegetable
Day 3: Rice + Egg + Vegetable curry
Day 4: Rice + Sambar with vegetable
Day 5: Rice + Egg + legume vegetable curry
Day 6 : Special Rice like vegetable biryani*

* Suggested below

Preparations that can be included on one or two days in a week:

1. Peas Pulao (using dry green or yellow peas) + Vegetablekhorma
2. Vegetable Biryani (using Kabuli channa)
3. Soy Mealmaker biryani + Vegetable khorma
4. Kichidi with drumstick leaf and moong dhal + Vegetable chutney
5. Palak or Amaranthrice with Kabuli channa + Vegetable chutney
6. Rice + Tomato and dry peas curry
7. Rice + Country beans and moong dhal curry
8. Rice + Kabuli channa curry/ chole
9. Rice + Channa dhal with ridge gourd/ bottle gourd curry
10. Rice + Whole green gram / Cowpea curry

- (iii) Promoting use of seasonal low case unconventional foods in Mid Day Meal Scheme.

- (iv) Ensuring the supply of food grains up to the school level in full quantity in consultation with Civil Supplies Department.
- (v) Head Masters may be instructed to setup the kitchen gardens in the schools where land is available.
- (vi) Regular Peer Monitoring may be undertaken by the concerned stakeholders,
- (vii) Capacity building of all the stakeholders at Mandal and District level is required for effective implementation of the MDMS.
- (viii) The meetings of the District and Mandal Level Steering-cum-Monitoring Committee should be held at regular intervals as per the MDMS Guidelines.
- (ix) Develop system to obtain Periodic feedback from the stakeholders and other concerned officials/teachers who are engaged at the grass root level.
- (x) The MIS data entry requires urgent attention. Training to all Data entry operators and MEOs in this regard is recommended.

2.20 Case Studies / Write up on best / innovative practices followed in the State alongwith some high resolution photographs of these best/innovative practices:

The following best practices under Mid Day Meal Programme in Telangana are worth mentioning:

1. **From 01-01-2015 onwards, superfine quality rice supplied to all the schools to serve Mid Day meals to all the children upto Classes I to X in the State.**
2. **Super Fine Rice is being supplied from MLS point to the School Point.**
3. The Government of Telangana is releasing budget in advance for Mid Day Meal Scheme.

4. COVERAGE OF IX & X CLASS STUDENTS UNDER MID DAY MEAL:

5 lakhs students studying in classes IX & X in all Government, Local body and Government Aided schools are also covered under Mid Day Meal. The reason is that there is every possibility of students dropping out after completing class VIII especially girls without completing High School stage of education.

5. SOCIAL AUDIT OF MID DAY MEAL PROGRAMME:

MOU has been entered into with Social Audit of MDM programme through NGO, Society for Social Audit, Accountability and Transparency(SSAAT) who has considerable experience in social audit of MNRGE scheme for taking up Social audit in 6 school in each district for 10 districts. The agency has completed the Social Audit and the report

was communicated to the concerned Head Masters through the DEOs concerned and rectified the mistakes pointed out therein.

6. ADDITIONAL RECIPES:

In addition to the food items as per the menu, egg is also provided thrice a week.

The details of nutritional recipes prepared by NIN and Home Science College, Hyderabad were communicated to all the District Educational Officers in the State for implementation providing for flexible and local specific recipes to suit the tastes of the children.

Children Enjoying with EGG



CELEBRATIONS OF EGG DAY

7. COOK CUM HELPERS TO NGOs: The NGOs are engaging the cook-cum-helpers proportionately to the schools and Centralized kitchens.

8. REGULAR REVIEW OF THE SCHEME BY THE STATE AUTHORITIES

Regular video conferences with all the RJDSEs/DEOs in the State are being held by the Commissioner and Director of School Education and the implementation of scheme is reviewed and they are being instructed on the steps to be taken.

9. CREATION OF MONITORING AND EVALUATION CELL:

A Monitoring and Evaluation Cell for Mid Day Meal Scheme is created for MDM scheme at State level. The Cell is performing the following duties:

- Reviewing and evaluating the inspection and monitoring forms submitted by the RJDSEs/DEOs periodically.
- Reviewing press clippings and take up immediate follow up action.
- Collecting the data required from the districts for onward submission to Govt. of India and Govt. of Telangana.

10. Payments are made to all the Implementing agencies and Cook cum helpers through online to their bank accounts.

11. Complaints are being received through **web based child right cell** with toll free No 1800-425-3525 and 1800-425-7426 in the O/o Director of School Education. As soon as the complaint is received the applicant is provided with a reference number and the information is sent through mail to the MEO and informed him about receipt of complaint through message to his cell number. The Intimation is sent to the DEO and State officers. MEO visit the schools sort out the issue and submit compliance report through mail.

12. All the DEOs are also receiving grievances through landline phone maintained for MDM in DEOs office.

2.21 Untoward incidents:

2.21.1: Instances of unhygienic food served, children falling ill:

As soon as the information is received about occurrence of any untoward incident, instructions are issued to the DEO under intimation to the Dist. Collectors to medical aid to the suffered students on priority and to conduct enquiry and initiate action against the persons responsible for the incidence. Mostly incidences occur due to negligence of the Cooking agency and in such cases apart from initiating criminal case as per the gravity of the incidence, the cooking agencies are being replaced. Instructions are issued to the DEOs that they along with MEO and HM will be personally held responsible for irregularities, lapses, untoward incidences if any.

2.21.2 Sub-standard supplies:

No such cases are reported and the departmental officers at the time of visit are verifying the material being used by the cooking agency and if any sub standard material are noticed issuing instructions to the HM and the Cooking agency to see that the same are replaced with quality material.

2.21.3 Diversion/misuse of resources:

No such cases. Instructions have been issued to the DEOs to utilize the budget for the purpose for which it is released and not to divert the funds for other purposes.

2.21.4 Social discrimination:

No such cases are reported as every care is taken at school point to discourage such practices. Instructions have been issued to the DEOs to see that the children are not discriminated based on their social status in the school including while serving MDM.

2.21.5 Action taken and safety measures adopted to avoid recurrence of such incidents. Whether Emergency Plan exists to tackle any untoward incident:

Action will be taken against the persons responsible and in the State RTE Rules 2010. Instructions are issued that children belonging to weaker sections and disadvantaged groups are not discriminated in any manner as laid down in the RTE Act 2009. The HM is responsible for implementing the same. MEO is the Grievance redressal authority and the Dist. Collector is the Appellate Authority in case of any complaints of social discrimination is brought to their notice.

2.22 Status of Rashtriya Bal Swasthya Karyakram :

2.22.1 Provision of micro-nutrients, Vitamin-A, de-worming medicine, Iron and Folic acid (WIFS):

The Government of Telangana has developed an app of RBSK, Telangana in Google Play Store. The Government of Telangana have supplied tablet PCs to all the teams of RBSK for uploading the data on the same day of visit to the schools about the screening of students.

The RBSK team is consisting the following 4 members:

- 1) Male Doctor.
- 2) Female Doctor.
- 3) ANM
- 4) Pharmacist

The team will visit the schools daily and make health check-ups for 120 students in each day. During their health check-ups they will record the height, weight and health record of the students and upload the data through the tablet PC provided to them.

The following are the components of Health services covered under the Programme:

Screening, Health care and referral

Immunization

Micronutrient (Vitamin A and Iron Folic Acid) management

De-worming

Health promoting schools

The Doctor (s) who work in the Primary Health Center nearer to the school visit the school twice in a month and conducts health checkup of the students. The Health Registers are maintained at the School level and are updated regularly. Cases which need further health care are referred to the District Early Intervention Center and also referral hospitals.

- On every Monday the ANMs will give iron, folic acid supplements and calcium supplements to the students identified with the anaemia.
- The RBSK teams are organizing health awareness classes to the parents, teachers, students and Cook-cum-Helpers in the schools.
- The details of district wise screened are available in rbsk.telangana.gov.in portal.

Particulars upto Mar, 2019:

Stage	Health Check up carried out		Distribution of Iron Folic Acid Tablets		Distribution of De-worming Tablets	
	No. of Schools/Centers	No. of Children	No. of Schools /Centers	No. of Children	No. of Schools / Centers	No. of Children
Primary & Upper Primary	23973	1449622	23479	1372200	25620	1677509

Implementation of Rashtriya Bal Swasthya Karyakram



Health Check-up to the students



2.22.2 Distribution of spectacles to children with refractive error :

Spectacles have been distributed to the 14,105 students under RBSK programme.

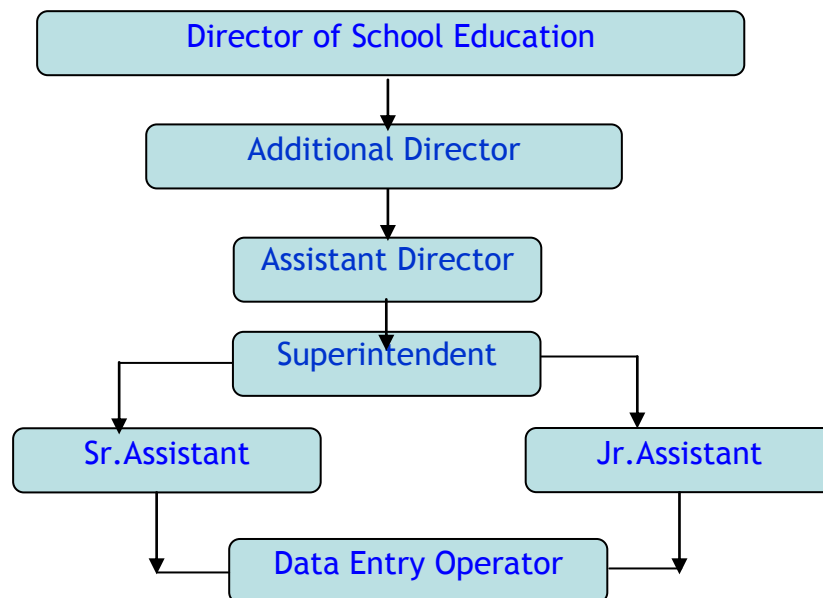
2.22.3 Recording of height, weight etc :-

The health cards are maintained at the school level and are updated regularly.

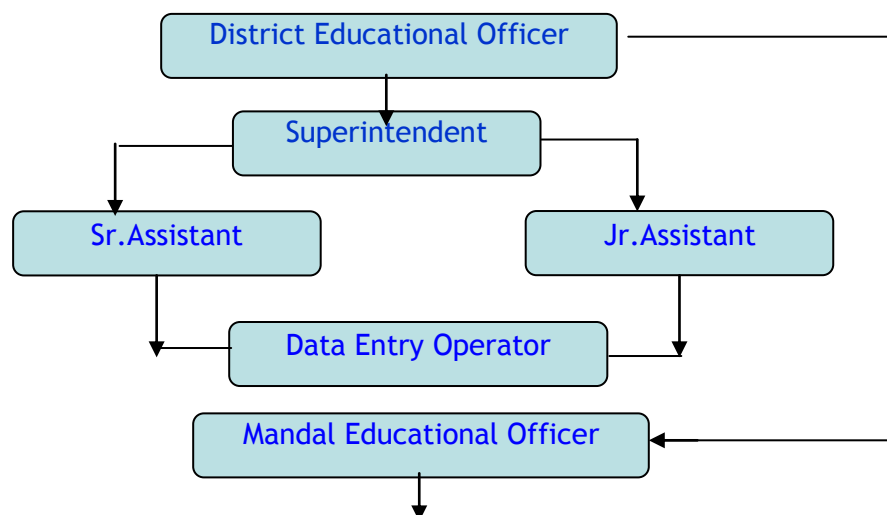
2.22.4 Number of visits made by the RBSK team for the health check-up of the children (Please ensure to upload at least two photographs of the visit of medical team in each school on MDM – MIS portal) :- Doctors who work in primary health centers nearer to the school visit the school twice a month and conduct checkup to the students. Cases who need further health care are referred to district and state level referral hospitals.

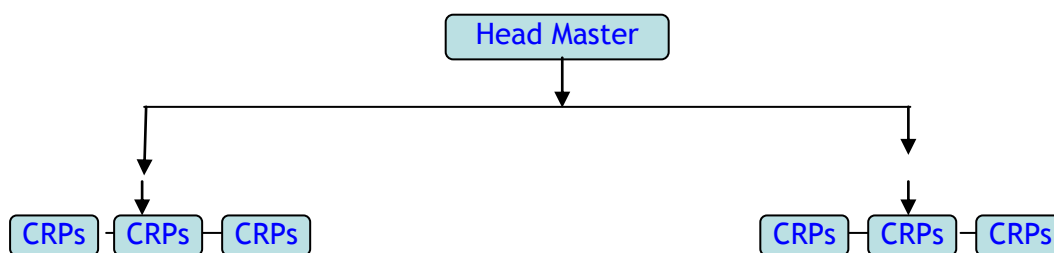
2.23. Present monitoring structure at various levels. Strategy for establishment of monitoring cell at various levels viz. Block, District and State level for effective monitoring of the scheme:

State Level : Additional Director (MDM), Assistant Director (MDM), Superintendent and section of MDM and Data Entry Operator.



District Level: District Educational Officer, Assistant Director (MDM), Superintendent and section of MDM and Data Entry Operator.





Mandal Level Committees comprising of MEO, MPDs and Tahasildars are authorized to take action on the Agencies in case of any deviations or untoward happenings if any. In Urban areas, a committee headed by the Tahasildar identifies Community Development Societies, NGOs, Urban SHGs, DWACRA, School Education Committees and other Agencies as implementing agencies after verifying their antecedents.

The District and Mandal level Officers look after MDM along with their regular jobs.

2.24 Meetings of steering cum monitoring committees at the block, District and State Level:

2.24.1 No. of meetings held at various levels and gist of the issues discussed in the meeting:

Strengthening of Mandal level Monitoring Mechanism:

In Telangana 584 Mandals have been created in place of erstwhile Development Blocks. Tahsildar identifies and appoints the implementing agencies. He also monitors the functioning of the agencies. In case of any deviations, corrective action is taken by him. He also monitors the supply of food grains by the Civil Supplies Department field staff.

1. Mandal Educational Officer MEO along with Cluster Resource Persons (CRPs) monitors the quality and supply of regular hot cooked food in all the schools in the Mandal.

To strengthen the Monitoring Mechanism of the Mid Day Meal Programme at the Mandal level Government of Telangana have taken a decision to engage the services of (1) Data Entry Operator per Mandal on payment of Rs.10/- per school per month. The expenditure is met from the MME head of Mid Day Meal Programme budget.

2. School Management Committees:

As per RTE Act 2009, in 19323 Primary schools and in 8409 Upper Primary Schools, 27732 SMCs are constituted.

The SMC Members are invariably parents of the school children. They actively participate in cooking and serving of Mid Day Meal every day. At least one parent is invited

to be present while the food is cooked and served. Before the food is served they are also requested to taste the food and check the quality.

The lady SMC Members are also members of Self Help Groups and are entrusted with the responsibility of cooking the Meal as implementing agencies.

2.24.2 Action taken on the decisions taken during these meetings:

As per the RTE Act. 2009, and Government of India guidelines, each and every decision to be implemented at the school point has to be taken by the resolution of school management committee only. The SMC account is maintained in Joint account by the Chairman, SMC and Head Master. All the amounts pertaining to the school are released to the SMC account only.

2.25 Frequency of meeting of District level committee held under the Chairmanship of senior most MP of the District to monitor the scheme. Gist of the issues discussed and action taken thereon:

Instructions issued to the Dist. Collectors to conduct meeting of District level committee held under the Chairmanship of senior most MP of the District as frequently as possible to monitor the scheme, discuss the issues MDM and action taken thereon.

2.26 Arrangement for official inspections to MDM centers and percentage of schools inspected and summary of findings and remedial measures.

I. INSPECTION OF MDM AS TARGET FOR INSPECTING OFFICERS:-

The Government of Telangana have taken a decision to make it mandatory for all the inspecting officers from State level to Mandal level to inspect the Mid Day Meal Programme in their Visit and inspecting schedule. Instructions have been issued by Commissioner & Director of School Education, Telangana for minimum Coverage, monthly.

- ❖ Regional Joint Directors of School Education :5%
- ❖ District Educational Officers :10%
- ❖ Deputy Educational Officers (Sub Division level) :30%
- ❖ Mandal Educational Officers :30%
- ❖ Instructions were issued to all the districts, that for effective implementation, each Mandal should be divided into three parts and School in each part should be inspected by Mandal Educational Officer, Mandal Development Officer and Extension Officer Rural Development (EORD). They should take responsibility of inspecting 15

to 20 schools in their jurisdiction with overall responsibility lying with Mandal Educational Officer. The DEO / Dy.E.O / M.E.O must make surprise visit every day of two schools for inspecting MDM.

Inspections are done in 100% schools which are serving Mid Day Meals in the State.

2.27 Details of the contingency plan to avoid any untoward incident: printing of important phone numbers (e.g. Primary health Centre, hospital, Fire Brigade etc) on the walls of school building:

108 and 104 emergency services (Mobile medical vans) are being utilised in case of any untoward incident in Mid Day Meal Scheme and they are connected to the Local Hospitals/ Public Health Centers in case of any emergency. The contact numbers of Local medical Officer, Health Center/Hospital, Police, Tahasildar and Mandal Education Officer are made available to schools for emergency help.

2.28 Grievance Redressal Mechanism :

2.28.1 Details regarding Grievances Redressal at all levels:

In Telangana the Grievance Redressal Mechanism is in place in a decentralized manner at the district level. All the District Collectors conduct 'Grievances Day' on every Monday in their offices and all the District officers attend the meeting compulsorily. Any complaints reported will be handed over to the District Educational Officer on the spot for immediate action. Grievances are being received through media, sms, and postal system and directly from the affected person.

The Grievances are also received through Web based child help line toll free number 1800-425-3525 is functioning at State level in O/o Commissioner & Director of School Education to receive problems being faced by the children. As soon as call is received message is sent to the MEO under intimation to the District Officers to solve the problem and submit action taken report through online within a week. Further, in each District a dedicated landline is established for receiving grievances. MROs are authorized to take action on the Agencies in case of any deviations or untoward happenings if any. In Urban areas, a committee headed by the MRO identifies Community Development Societies, NGOs, Urban SHGs, DWACRA, School Education Committees and other Agencies as implementing agencies after verifying their antecedents. All the DEOs have been requested to install separate landline phone in the DEOs office to receive complaints and take action to solve the same.

2.28.2 Details of complaints received i.e. Nature of complaints etc:

S.No	Nature of complaint	No. of complaints	Remarks	Action taken
1	Food Grain Related issue	4	Disposed	
2	Quality and Quantity of Mid Day Meal Scheme	6	Disposed	Instructions are issued for maintenance of good quality MDM.
3	Any unto-ward incident	1	Disposed	Students immediately admitted in the hospital and discharged on the same day.
4	Other (Payment of cooking cost)	2	Disposed	Payments are made in time.
Total		13		

2.28.3 Time schedule for disposal of complaints:

Based on the gravity of the complaint, maximum within a period of one week the complaints are disposed off.

2.28.4 Details of action taken on the complaints:

Instructions are issued to the DEOs and MEOs to solve the problem within a week. Out of 9 grievances received at District and mandal level, all the complaints are solved.

2.29 Details regarding Awareness Generation & IEC activities and media Campaign, carried out at State/District/Block/School level:

The objectives of the scheme and information with regard to other components of the scheme are being published by the DEOs through pamphlets etc., and being made available to the parents of the students. Menu is being displayed on prominent place of the school and during the parent teacher meetings etc., the parents are being informed of the scheme.

CDs on the implementation of the scheme were distributed to the State Resource Persons during the training held at Dr. MCRHRD, Hyderabad. Standard Operating Procedures (SOPs) and Do's and Don'ts are also being printed for distribution to all the schools in the State.

2.30 Overall assessment of the manner in which implementation of the programme is contributing to the programme objectives and an analysis of strengths and weaknesses of the programme implementation.

Mid Day Meal Scheme has undoubtedly resulted in increased school attendance and facilitated in retention of children in school for a longer period. The Scheme has played a crucial role in reducing drop out, especially among girls. Parents viewed that the mid day meal had reduced the burden of providing one time meal to their children while they were away from home in the afternoons and considered it as a great support to their families. Teachers opined that mid day meal aided in active learning of children, which indirectly improved their academic performance.

1. Class room hunger eliminated:

Mid Day Meal helps the malnourished and well nourished children to overcome short term hunger and thereby **increase their concentration and learning** inside the classroom. It not only takes care of the dietary gap but can also be effective in ensuring that short-term hunger does not inhibit their capacity to learn (Mathew, 2003). This programme has created a very congenial atmosphere for education, health growth and overall well-being of the poor and needy children Drop out rate reduced:

2. Increase in Retention rate and decrease in drop out rate:

Results of the study on the educational component indicated improved attendance, increased retention rate with reduced dropout rates, and a marginal improvement in the scholastic performance. The nutritional component revealed better growth performance among the regular beneficiaries in the program. The MDM program acts as a security net for children, cushioning them from negative nutritional factors; in particular, among younger children, there are large and significant gains for children who suffered from the impact of drought.

3. Gradual increase in quality (Students' performance) :

Brain development and cognitive abilities for the entire life are strongly determined by the nutritional status of the child. Malnutrition –that is, deficiencies in micronutrients - can be seen as a “silent hunger” in which cognitive development is affected. Nutrition clearly determines the future learning, working and thinking performance of children. Introduction of Mid Day Meal Scheme has tackled the problem of hunger among the students and has helped in the increase in the performance of the students.

4. Community Participation:

The involvement of the mothers of the children in the MDM programme made the programme successful leaving little room for corruption and has dramatically improved the quality of the meal. The mothers' group of each school selects from among themselves those who will cook and serve the meals. The involvement of the mothers in the meal

programme has had many positive spin-offs. Their presence on the school premises and the constant and regular monitoring by the State authorities ensure that teachers do not absent themselves from work and classes are run on a regular basis.

5. Women empowerment achieved:

Majority of CCHs involved in the MDM scheme are women. The MDM scheme provides an excellent opportunity for female employment in rural areas and liberating working women from the burden of having to feed the children at home during the day.

6. Social distances eliminated:

The impact of the programme was found to be more impressive among the SC, ST and Muslim households. Apart from the impact of the programme on the rate of attendance of children, parents pointed towards the invaluable nutrition support provided for the children, particularly of the poor family background. It is also reducing the gaps of social distances (caste, religion, gender, etc.)

Social group wise details of Cook cum Helpers:

Gender	SC	ST	OBC	Minority	Others	Total
Male	1530	1116	3156	782	424	7008
Female	11096	8932	23030	2555	1611	47224
Total	12626	10048	26186	3337	2035	54232

7. MDM Programme far more strengthened: -

The MDM programme had a significant impact on improving the daily participation rates of children in lower grades. The average monthly attendance rate of girls is higher while there was a positive but insignificant effect on grade one boys' attendance rate. The impact on enrolment levels was insignificant.

There is no problem with the release of funds needed for implementation of the programme.

Involvement of all the officials from State level to school level also helped the smooth functioning of the scheme. Inspections of the schools by the visiting officials and tasting of food by them ensured that quality food is served to the children.

Monitoring Cell formation and Grievance Cell formation ensured instant solving of problems, if any.

Instructions issued from State level authorities in Video conferences also strengthened the scheme.

2.31 Action plan for ensuring enrolment of all school children under Adhaar before the stipulated date:

94% of enrolled students are having AADHAR. AADHAR kits are supplied to the Mandal points to ensure 100% enrollment of Aadhar.

2.32 Contribution by community in the form of Tithi Bhojanam or any other similar practices in the State/ UT etc:-

No intervention like Tithi Bhojan has been taken up in the State as such no additional meal/items or kind provided.

2.33 Availability of kitchen gardens in the schools. Details of the mechanisms adopted for the setting up and Maintenance of kitchen gardens.

2.33.1 Status of availability of kitchen gardens in the schools. (Please furnish school wise details for all districts in the table given at Annexure –W 1).

In the State of Telangana there are 1328 Kitchen gardens available in the schools

2.33.2 Mapping of schools with the corresponding Krishi Vigyan Kendras (KVK).

The following Krishi Vigyan Kendras are available in the State of Telangana

1	Krishi Vigyan Kendra,Ramnagar, Adilabad - 504001
2	Krishi Vigyan Kendra, Jaya Prakashnagar, , Jammikunta, Dist: Karimnagar - 505122
3	Krishi Vigyan Kendra, Ramagirihilla, Ratnapur Kamanpur (M) Dist: Karimnagar – 505212
4	Krishi Vigyan Kendra, Wyra -507 165
5	Krishi Vigyan Kendra, Youth For Action, Madanapuram Kothakota Mandal,Mahabubnagar District-- 509110

6	Palem - 509 215 Mahabubnagar Dist, Telangana State. Phone No. 08540 - 228644 Cell No. 7702 36611
7	DDS- Krishi Vigyan Kendra, PO.Box No.214, Near Allana factory, Didigi Village, Zaheerabad-502220, Medak
8	Krishi Vigyan Kendra Gaddipally Village & Post Garedepally Mandal, Nalgonda -508 201
9	Krishi Vigyan Kendra, Kampasagar, Babusaipet Post 508 207, Nalgonda District
10	Krishi Vigyan Kendra (Farm Science Centre) Rudrur, Nizamabad Dist -503188
11	Krishi Vigyan Kendra, Hayathnagar Research Farm, Hayathnagar - 501 505
12	Krishi Vigyan Kendra, Malyal, Mahabubabad, Warangal district
13	Krishi Vigyan Kendra LRS, Mamnoor Warangal -506166
14	Village Garimellapadu, Kothagudem Mandal, Khammam Distt. Telangana Warangal -506166
15	Village Garimellapadu, Vill. Budakalan, Bellampally Mandal, Distt. Mancherial, Telangana.
16	Krishi Vigyan Kendra, Village Tuniki, Kowdipally Mandal,, Distt. Medak, Telangana

Instructions are being issued to all the District Educational Officers to contact the Krishi Vigyan Kendras concerned and take necessary action for setting up of kitchen gardens in the schools.

2.33.3 Details of the mechanisms adopted for the setting up and Maintenance of kitchen gardens.

The Head Masters, Teachers and students are setting up the kitchen gardens with the help of SMCs and villagers.

The District Collector, Adilabad has taken initiation and established kitchen gardens in 43 schools during the year 2018-19 and given awards to the following schools which are established best kitchen gardens.

- 1.ZPSS Kajjarla Mandal:Talamadugu
- 2.Model School Boath
- 3.MP UPS Anthergaon Mdl:Bheempur

2.33.4 Whether the produce of these kitchen gardens is used in MDM.

In general the following vegetables are growing in the schools and they are utilizing in cooking of Mid Day Meals.

Tomato, brinjal, bottle guard, ridge guard, drum sticks, coriander, palak etc.,



2.33.5 Action plan for setting up of kitchen gardens in all schools.

1328 schools are having kitchen gardens in the State and instructions are issued to all the Head Masters to setup the kitchen gardens in the schools during Harita Haaram Programme.

2.34 Details of action taken to operationalize the MDM Rules, 2015:-

State rules on Mid Day Meal Scheme are being framed keeping in view the MDM rules notified by Central Government..

2.35 Details of payment of Food Security Allowances and its mechanism.

The action plan is being prepared for payment of Food Security Allowances and its mechanism.

2.36 Cooking Competition

2.36.1 Whether cooking competitions have been organized at different levels in 2018-19,

During the year 2018-19, the cooking competitions have not been conducted in the State.

2.36.2 if yes in 2.36.1,

2.36.2.1 the number of participants in these competitions

2.36.2.2 Details of judges

2.36.2.3 How many participants were awarded

2.36.2.4 Was the awarded participants given any cash prizes

2.36.2.5 Whether the awarded recipes have been shared with school

2.36.3 Details of action plan for year 2019-20

Instructions will be issued to all the District Educational Officers and Mandal Educational Officers to organize the cooking competitions at Mandal level and District level and State level by giving the following prizes.

Sl.No	Mandal Level	District Level	State Level
Organizing Expenditure	5,000/-	25,000/-	1,00,000/-
1 st Prize	1,500/-	3,000/-	6,000/-
2 nd Prize	1,000/-	2,000/-	4,000/-
3 rd Prize	500/-	1,000/-	2,000/-

2.37 Details of minor modifications from the existing guidelines carried out by District Level Committee chaired by the District Magistrate.

The District Level Committees have not modified any existing guidelines of the Mid Day Meal Scheme.

2.38 Details of new interventions envisaged under 5% flexi funds – For each intervention, please provide detailed information in the below template

Item	Setting up of Kitchen gardens	Additional nutritious food to the girls students
2.38.1 Background Note	Most of the Implementing Agencies are from Self Help Groups (women) in the schools where kitchen gardens are set up. The vegetables were being used in MDM and improve the quality of food	The District Collector, Hyderabad has identified the anaemic girls students in Hyderabad district during 2018-19 by health check-ups conducted by RBSK teams and found most of the girls students are having less than 8% haemoglobin percentage.
2.38.2 Objectives	To give good quality of food by adding sufficient vegetables in the Mid Day Meals	To increase the haemoglobin %, iron and vitamins in the girls students to address anemic problem and also to provide additional nutritious values.
2.38.3 Rationale for the intervention	To improve the quality of food served to children under Mid Day Meals and improve the health standards of children. Ultimately will lead to improvement of learning of children in schools.	It is observed by the RBSK team in the girls students who have taken Ragi laddu which consists 60% of raagi and 40% jaggery and 5ml of pure ghee with weight of 40 gms for 3 months and found that the HB % has been increased in those students.
2.38.4 Time lines	June, 2019 to Dec, 2019	Sep, 2019 to Dec, 2019
2.38.5 Coverage		
2.38.5.1 Number of Districts	33	33
2.38.5.2 Number of schools	13694	8,409
2.38.5.3 Number of children		Girls students of classes VI to VIII - 3,53,565
2.38.5.4 Number of working days		38 days (thrice in week for 13 weeks)
2.38.6 Requirement of Funds	6.84 Cr.	Rs. 8,06,12,820/-
2.38.7 Monitoring	The Mandal Educational Officers will visit the schools and supervise the kitchen gardens, SMC participation, Teacher, students participation and parents participation	The Head Master of the school, teachers in the RBSK team will monitor.
2.38.8 Outcome measurement	Seasonal vegetables will be available in the garden for using them in preparation of Mid Day Meals.	By checking HB% to the girls students before serving raagi laddu and after completion of 60 days of serving.
2.38.9 Impact assessment.	The students will get good quality of vegetables and leafy vegetables to get nutritious food.	The girls students will get the required iron and vitamins to the body and HB% will increase and anemic problem in girls students will be reduced.

Performance: At present there are 1328 Kitchen gardens in the schools in the State of Telangana. In general the following vegetables are growing in the schools and they are utilizing in cooking of Mid Day Meals.

Tomato, brinjal, bottle guard, ridge guard, drum sticks, coriander, palak etc

The students are also participating in formation and developing of kitchen gardens. At present with the self initiation of teachers, students and SMCs the kitchen gardens are developed. The SMCs are participating in the development of schools.

Proposal : It is proposed to give training to the teachers @ 1 teacher per school at the mandal level in convergence with Krishi Vignan Kendras.

Requirement of funds per school:

Seeds	–	Rs. 1000/-
Natural manure	-	Rs. 1000/-
Equipment	-	Rs. 1500/-
Other Expenditure	-	Rs. 1500/-
Total	-	Rs. 5000/-

Note: Supplementary proposal will be submitted for the balance of 5% flexi funds.

2.39 Any other issue and suggestions:-

1. Accord permission to engage one computer operator at mandal point to attend the data entry, collection of information from schools and preparation of bills and other related MDM work is needed.
2. Need more active Community participation in the sense they should voluntarily come forward to help the school authorities in properly serving the MDM to the students. Action in this regard is being taken.
3. Sanction and timely release of adequate budget will be ensured as the Government is in favour of admitting payments pertaining to MDMS under Green Channel.
4. Subsidy on gas should be constituted as its withdrawal is discouraging the cooking agencies from using the gas under MDMS.

<<<>>>

School wise information on kitchen gardens

S. No.	District Name	Name of Block	Name of school	Type of kitchen field (open field, terrace, containers)	Size of kitchen garden (approx. sq mt)	Main produce	Quantity of produce (in Kg)	Participating agencies (KVK, Horticulture Dept., Community, School's own initiative)
1	Adilabad	Gudihathnoor	ZPHS TOSHAM	Open Field	15 sq mt	Tomato, Brinjal, chilli, Corionder	3 Kgs	School's own initiative
2	Adilabad	Gudihathnoor	ZPHS MANNUR	Open Field	15 sq mt	Tomato, Brinjal, chilli, Corionder	3 Kgs	School's own initiative
3	Adilabad	Gudihathnoor	GOVT HS GUDIHATHNOOR	Open Field	20 Sq mt	Tomato, Brinjal, chilli, Corionder	3 Kgs	School's own initiative
4	Adilabad	Bela	ZPSS SIRSANNA	Open Field	20	Brinjal, Tomato, Green chilli ,	3 kg	School's own initiative
5	Adilabad	Bela	MPPS AWALPUR	Open Field	15	Brinjal, Tomato, Green chilli	2 kg	School's own initiative
6	Adilabad	Bela	MPPS GUDA	Open Field	50	Brinjal, Tomato, Green chilli	1kg	School's own initiative
7	Adilabad	Bela	MPUPS BHEDODA	Open Field	16	Brinjal, Tomato, Green chilli	2 kg	School's own initiative
8	Adilabad	Bela	MPSS SIRSANNA	Open Field	25	Brinjal, Tomato, Green chilli	2 kg	School's own initiative
9	Adilabad	Bela	MPPS MANIYARPUR	Open Field	25	Brinjal, Tomato, Green chilli	1 kg	School's own initiative
10	Adilabad	Bela	ZPSS SANGIDI	Open Field	30	Brinjal, Tomato, Green chilli	3 kg	School's own initiative
11	Adilabad	Bela	ZPSS BELA	Open Field	20	Brinjal, Tomato, Green chilli	2 kg	School's own initiative
12	Adilabad	Bela	MPUPS TOYAGUDA	Open Field	15	Brinjal, Tomato, Green chilli	1 kg	School's own initiative
13	Adilabad	Bela	MPPS ASHOKNAGAR	Open Field	15	Brinjal, Tomato, Green chilli	1 kg	School's own initiative
14	Adilabad	Bela	ZPSS KHOGDUR-MM	Open Field	15	Brinjal, Tomato, Green chilli	1 kg	School's own initiative
15	Adilabad	Boath	ZPSS Dhannur - B	Open Field	40	Brinjal, Tomato, Green chilli	05 Kgs, 05 Kgs	School's own initiative
16	Adilabad	Boath	ZPSS Kowtha - B	Open Field	35	Brinjal, Tomato, Green chilli	05 Kgs, 05 Kgs, 02 Kgs	School's own initiative
17	Adilabad	Boath	ZPSS Pochera	Open Field	25	Brinjal, Tomato, Green chilli	02 Kgs, 02 Kgs, 02 Kgs	School's own initiative
18	Adilabad	Boath	ZPSS Kangudda	Open Field	30	Brinjal, Tomato, Green chilli	02 Kgs, 02 Kgs	School's own initiative

19	Adilabad	Boath	ZPSS Sonala	Open Field	40	Brinjal, Tomato, Green chilli	05 Kgs, 05 Kgs	School's own initiative
20	Adilabad	Boath	MPPS Kantegoam	Open Field	30	Brinjal, Tomato, Green chilli	02 Kgs, 01 Kgs	School's own initiative
21	Adilabad	Boath	ZPSS Marlapally	Open Field	30	Brinjal, Tomato, Green chilli	02 Kgs, 02 Kgs	School's own initiative
22	Adilabad	Boath	MPPS Babera - Old	Open Field	35	Brinjal, Tomato, Green chilli	03 Kgs, 02 Kgs	School's own initiative
23	Adilabad	Talamadugu	ZPSS Kajjarla	Open Field	20	Tomato, brinjal, Green chilli,	2 kg	School's own initiative
24	Adilabad	Talamadugu	ZPSS Khodad	Open Field	15	Tomato, brinjal, Green chilli	2 kg	School's own initiative
25	Adilabad	Talamadugu	MPPS Kothur	Open Field	10	Tomato, brinjal, Green chilli	1 kg	School's own initiative
26	Adilabad	Talamadugu	MPUP Arli K	Open Field	20	Tomato, brinjal, Green chilli	1 kg	School's own initiative
27	Adilabad	Echoda	MPPS Adegaon-K	Open Field	75 sq mtr	Brinjal, Tomato	16 kgs	School's own initiative
28	Adilabad	Echoda	MPPS Adegaon-K Sc colony	Open Field	50 Sq mtr	Brinjal, Tomato	5 kgs	School's own initiative
29	Jagityal	Ibrahimpatnam	MPUPS Fakirkondapur	Open Field	200 Sq Mt	tamato, brinjal, lady finger	1 kg	School's own initiative
30	Jagityal	Ibrahimpatnam	MPUPS Ammakkapet	Open Field	100 Sq Mt	tomato, brinjal, lady finger	1 kg	School's own
31	Jagityal	Ibrahimpatnam	MPUPS Komatikondapur	Open Field	80 Sq Mt	brinjal, lady finger, lettuce	1kg	School's own
32	Jagityal	Ibrahimpatnam	MPUPS Dabba	Open Field	50 Sq Mt	tamato, lady finger	1kg	School's own
33	Jagityal	Ibrahimpatnam	ZPHS Varshakonda	Open Field	200 Sq Mt	tamato, lady finger	2kg	School's own
34	Jagityal	Ibrahimpatnam	TSMS Ibrahimpatnam	Open Field	200 Sq Mt	tamato, lady finger	1kg	School's own
35	Jagityal	Ibrahimpatnam	KGBV Ibrahimpatnam	Open Field	200 Sq Mt	tamato, lady finger	2kg	School's own
36	Jagityal	MALLIAL	ZPHS MUTHYAMPET	OPEN FIELD		tamato	1KG	School own
37	Jagityal	MALLIAL	ZPHS RAMANNAPET	OPEN FIELD		mirchi kotmira	1 TO 3 KG	School own
38	Jagityal	MALLIAL	KGBV MALLIAL	OPEN FIELD		vankta tamoto	1 TO 3 KG	School own
39	Jagityal	DHARMAPURI	ZPHS DONTAHOOR	Open field	800	vegetables	5 to 10 kgs	School's own
40	Jagityal	DHARMAPURI	TS MS MAGGIDI	Open field	900	vegetables	5 to 10 kgs	School's own
41	Jagityal	DHARMAPURI	MPPS THIMMAPOOR	Open field	100	vegetables	2 to 5 Kgs	School's own
42	Jagityal	DHARMAPURI	MPPS RAMMAIAH PALLY	Open field	250	vegetables	2 to 5 Kgs	School's own
43	Jagityal	KODIMIAL	PS NALLAGONDA	OPEN FIELD	50	vegetables	1 to 2 kgs	SCHOOL S'S OWN
44	Jagityal	KODIMIAL	PS NAMILIKONDA	OPEN FIELD	50	vegetables	1 to 2 kgs	SCHOOL S'S OWN
45	Jagityal	KODIMIAL	PS RAMSAGAR	OPEN FIELD	50	vegetables	1 to 2 kgs	SCHOOL S'S OWN

46	Jagityal	KODIMIAL	ZPHS THIPPAIPALLY	OPEN FIELD	50	vegetables	1 to 2 kgs	SCHOOL S'S OWN
47	Jagityal	Raikal	MPPS Kothapet	Open field	25sq mt	Brinjal, tomato	3 kg	School's own initiative
48	Jagityal	Raikal	MPPS Ramaraopalle	Open field	100sq	Beans, Brinjal, tomato,	40kgs	School's own initiative
49	Jagityal	Gollapally	Mpps rapally	Open field		Tomato, lady finger	1/2 kg	Schools own initiatives
50	Jagityal	Gollapally	Mpps vengalapur	Open field		Tomato, lady fingers	1/2 kg	Schools own initiatives
51	Jagityal	Gollapally	Mpps chilvakodur	Open field		Tomato, lady fingers	1kg	Schools own initiatives
52	Jagityal	Gollapally	Mpps aggimalla	Open field		Tomato, lady fingers	1kg	Schools own initiatives
53	Jagityal	Gollapally	Mpups israjally	Open field		Tomato, lady fingers	1kg	Schools own initiatives
54	Jagityal	Gollapally	Mpups thirumalapur	Open field		Tomato, lady fingers	2 kgs	Schools own initiatives
55	Jagityal	Gollapally	Mpus lothunur	Open field		Tomato, lady fingers	1kg	Schools own initiatives
56	Jagityal	Gollapally	Zphs thirumalapuram	Open field		Tomato, lady fingers	1kg	Schools own initiatives
57	Jagityal	Gollapally	Zphs chilvakodur	Open field		Tomato, lady fingers	1kg	Schools own initiatives
58	Jagityal	Gollapally	Zphs rangadamunipally	Open field		Tomato, lady fingers	2kgs	Schools own initiatives
59	Jagityal	Gollapally	Tsms Gollapally	Open field		Tomato, lady fingers	3kgs	Schools own initiatives
60	Kamareddy	KAMAREDDY	MPPS SCWADA	open field	50 Sq. mt.	Tomato, brinjal, palakura, benda, kottimeera, menthi, Mirchi, Thotakura, Beans	2 Kg	School's own initiative
61	Kamareddy	KAMAREDDY	ZPHS SCWADA	open field	20 Sq. mt.	Tomato, brinjal, palakura, benda, kottimeera, menthi	5 Kg	School's own initiative
62	Kamareddy	KAMAREDDY	MPPS BC UGGRAWAI	open field	50 Sq. mt.	palakura, benda, kottimeera, menthi, Mirchi, Thotakura, Beans	3 Kg	School's own initiative
63	Kamareddy	KAMAREDDY	MPUPS UGGRAWAI	open field	20 Sq. mt.	Tomato, brinjal, palakura, benda, kottimeera, menthi, Mirchi, Thotakura, Beans	5 Kg	School's own initiative
64	Kamareddy	KAMAREDDY	MPUPS KYASAMPALLY T	open field	40 Sq. mt.	Mirchi, Thotakura, Beans	2 Kg	School's own initiative
65	Kamareddy	KAMAREDDY	MPPS KYASAMPALLY	open field	30 Sq. mt.	Tomato, brinjal, palakura, benda, kottimeera, menthi, Mirchi, Thotakura, Beans	2 Kg	School's own initiative
66	Kamareddy	KAMAREDDY	MPPS CHINNAMALLAREDDY	open field	50 Sq. mt.	Tomato, brinjal, palakura, benda, kottimeera, menthi, Mirchi, Thotakura, Beans	5 Kg	School's own initiative

67	Kamareddy	KAMAREDD Y	MPPS RAJIV NAGAR U/M	open field	20 Sq. mt.	Tomato, brinjal, palakura, benda, kottimeera, menthi, Mirchi, Thotakura,	5 Kg	School's own initiative
68	Kamareddy	KAMAREDD Y	MPPS SHABDIPOOR	open field	20 Sq. mt.	Tomato, brinjal, palakura, benda, menthi, Mirchi, Thotakura, Beans	5 Kg	School's own initiative
69	Kamareddy	KAMAREDD Y	ZPHS LINGAPOOR	open field	50 Sq. mt.	Tomato, brinjal, palakura, benda, kottimeera, menthi, Mirchi, Thotakura, Beans	5 Kg	School's own initiative
70	Kamareddy	KAMAREDD Y	ZPHS DEVANPALLY	open field	50 Sq. mt.	Tomato, brinjal, palakura, benda, kottimeera, menthi, Mirchi, Thotakura, Beans	5 Kg	School's own initiative
71	Kamareddy	KAMAREDD Y	MPPS TEKRIYAL	open field	50 Sq. mt.	Tomato, brinjal, palakura, benda, kottimeera, menthi, Mirchi, Thotakura, Beans	5 Kg	School's own initiative
72	Kamareddy	KAMAREDD Y	MPUPS GUEDEM	open field	50 Sq. mt.	Tomato, brinjal, palakura, benda, kottimeera, menthi, Mirchi, Thotakura, Beans	4 Kg	School's own initiative
73	Kamareddy	KAMAREDD Y	MPPS THIMMAKPALLY K	open field	50 Sq. mt.	Tomato, brinjal, palakura, benda, kottimeera, menthi, Mirchi, Thotakura	5 Kg	School's own initiative
74	Kamareddy	KAMAREDD Y	MPPS NARSANNAPALLY	open field	50 Sq. mt.	benda, kottimeera, menthi, Mirchi, Thotakura, Beans	3 Kg	School's own initiative
75	Kamareddy	KAMAREDD Y	MPPS ADLOOR	open field	20 Sq. mt.	Tomato, brinjal, palakura, benda, kottimeera, menthi, Mirchi, Thotakura, Beans	3 Kg	School's own initiative
76	Kamareddy	KAMAREDD Y	ZPHS ADLOOR	open field	50 Sq. mt.	benda, kottimeera, menthi, Mirchi, Thotakura, Beans	5 Kg	School's own initiative
77	Kamareddy	KAMAREDD Y	CSI SCHOOL	open field	20 Sq. mt.	benda, kottimeera, menthi, Mirchi, Thotakura, Beans	2 Kg	School's own initiative
78	Kamareddy	KAMAREDD Y	PVP ORIENTAL	open field	50 Sq. mt.	Tomato, brinjal, palakura, benda, kottimeera, menthi, Mirchi, Thotakura, Beans	2 Kg	School's own initiative
79	Kamareddy	KAMAREDD Y	HINDI GUJARATHI	open field	20 Sq. mt.	menthi, Mirchi, Thotakura, Beans	5 Kg	School's own initiative
80	Kamareddy	KAMAREDD Y	MPPS AB NAGAR	open field	30 Sq. mt.	kottimeera, menthi, Mirchi, Thotakura, Beans	5 Kg	School's own initiative
81	Kamareddy	Birkur	MPUPS Kishtapur	Open field	150 Sq. Yrds	Methi, Kothimeera, Palak, Tomotto	2Kg	School's own initiative
82	Kamareddy	Birkur	MPUPS Thimmapur	Open field	100 Sq. Yrds	Sorakaya, Kothimeera, Vankaya, Tomotto	2Kg	School's own initiative
83	Kamareddy	Birkur	PS Birkur (G)	Open field	100 Sq. Yrds	Sorakaya, Kothimeera, Vankaya, Tomotto	2Kg	School's own initiative

84	Kamareddy	Nasurullabad	ZPHS Durki	Open field	100 Sq. Yrds	Methi, Kakara Kaya, Palak, Tomotto	3Kg	School's own initiative
85	Kamareddy	Nasurullabad	ZPHS Bommandev pally	Open field	200 Sq. Yrds	Methi, Kakara Kaya, Palak, Tomotto, Vankaya	3Kg	School's own initiative
86	Kamareddy	Nasurullabad	PS Bommandev pally	Open field	200 Sq. Yrds	Methi, Kakara Kaya, Palak, Tomotto, Vankaya, Bendi	1.5Kg	School's own initiative
87	Kamareddy	Nasurullabad	ZPHS Mirzapur	Open field	200 Sq. Yrds	Methi, Kakara Kaya, Palak, Tomotto	2Kg	School's own initiative
88	Kamareddy	Nasurullabad	Govt DNT UPS Ankole Td	Open field	100 Sq. Yrds	Methi, Kothimeera, Palak, Tomotto	2Kg	School's own initiative
89	Kamareddy	Nasurullabad	PS Ankole (V)	Open field	100 Sq. Yrds	Methi, Beera Kaya, Palak, Tomotto, Vankaya	1Kg	School's own initiative
90	Kamareddy	Nasurullabad	PS Boppas Pally	Open field	100 Sq. Yrds	Methi, Kothimeera, Palak, Tomotto	1Kg	School's own initiative
91	Kamareddy	Domakonda	PS(HW) muthyampet	Openfield	50 Sq. mt.	Tomato, Brinjal, Green chilli, Lady finger, carret, Mulagakaya	5kg	School's own initiative
92	Kamareddy	Domakonda	PS(HW) sangameshwar	Openfield	20 Sq.mt	Tomato, Brinjal, Green chilli, Lady finger, carret	3kg	School's own initiative
93	Kamareddy	LINGAMPET	ZPHS NALLAMADUGU	Open Field	15sq.mt	Tamato	1Kg	School Own initiative
94	Kamareddy	Machareddy	ZPHS Akkapur	Open Field	25sq.mt	Tamato	5kgs	School Own initiative
95	Kamareddy	Machareddy	MPUPS Rajkhanpet	Open Field	10sq.mt	Tamato	1Kg	School Own initiative
96	Kamareddy	Machareddy	MPUPS Rathnagiripally	Open Field	15sq.mt	Palakura, Kothimera	2kg	School Own initiative
97	Kamareddy	Machareddy	ZPHS Lachapet	Open Field	15sq.mt	Tamato	2kg	School Own initiative
98	Kamareddy	Machareddy	ZPHS Palwancha	Open Field	25sq.mt	Tamato, Kothimera	2kg	School Own initiative
99	Kamareddy	Machareddy	ZPHS Arepally	Open Field	10sq.mt	Tamato	2kg	School Own initiative
100	Kamareddy	Machareddy	ZPHS Somarampet	Open Field	10sq.mt	Tamato	2kg	School Own initiative
101	Kamareddy	Machareddy	MPUPS Potharam	Open Field	10sq.mt	Tamato	1kg	School Own initiative
102	Kamareddy	Machareddy	MPUPS Ghanpoor (M)	Open Field	10sq.mt	Tamato	2Kg	School Own initiative
103	Kamareddy	Machareddy	MPPS Akkapoor	Open Field	15sq.mt	Tamato	2Kg	School Own initiative
104	Kamareddy	Machareddy	MPUPS Banjapally	Open Field	15sq.mt	Tamato	2Kg	School Own initiative
105	Kamareddy	Machareddy	ZPHS Chukkapur	Open Field	25sq.mt	Palakura, Kothimera	2Kg	School Own initiative
106	Kamareddy	Machareddy	MPPS B.R Pally	Open Field	10sq.mt	Tamato	2Kg	School Own

								initiative
107	Kamareddy	Machareddy	ZPHS Yellampet	Open Field	20sq.mt	Tamato	2Kg	School Own initiative
108	Kamareddy	Machareddy	MPPS Nadimi (T)	Open Field	10sq.mt	Tamato	1Kg	School Own initiative
109	Kamareddy	Bichkunda	ZPHS Wajid Nagar	open field	25sq.mt	Lady Finger, Tomato, Mulakkaya	2Kg	School Own initiative
110	Kamareddy	PEDDAKOD APGAL	MPPS JAGANNATH PALLY	Open field	75 Sq Mt	brinjal and tomato	1kg	own initiative
111	Kamareddy	PITLAM	MPPS SIDDAPUR	Open field	20 Sq Mt	TOMATO, BRINJAL & LADYFINGER	2 Kg	School Own initiative
112	Kamareddy	PITLAM	MPPS HARIJANWADA CHILLARGI	Open field	10 Sq Mt	TOMATO, BRINJAL & LADYFINGER	2 Kg	School Own initiative
113	Kamareddy	PITLAM	ZPHS CHILLARGI	Open field	50 Sq Mt	TOMATO, BRINJAL & LADYFINGER	5Kg	School Own initiative
114	Kamareddy	RAMAREDDY	GOVT DNT PS KANNAPUR THANDA	OPEN FIELD	50 Sq Mt	TOMATO	1 KG	School's own initiative
115	Kamareddy	RAMAREDDY	MPPS UPPALWAI	OPEN FIELD	10 Sq Mt	TOMATO	1 KG	School's own initiative
116	Kamareddy	RAMAREDDY	GOVT(DNT) PS GOKUL THANDA	OPEN FIELD	15 sq mt	TAMATO, BEANS, MENTAM	2 KGS	School's own initiative
117	Kamareddy	RAMAREDDY	MPPS ISSANNAPALLY	OPEN FIELD	10 Sq Mt	TAMOTO	2 KGS	School's own initiative
118	Kamareddy	RAMAREDDY	ZPHS GIDDA	OPEN FIELD	20 Sq Mt	TAMOTO, BEANS, LADIES FINGER	3 KGS	School's own initiative
119	Kamareddy	RAMAREDDY	ZPHS UPPALWAI	OPEN FIELD	25 Sq Mt	TAMOTO, CORIYANDRAM	2 KGS	School's own initiative
120	Kamareddy	RAMAREDDY	ZPHS RAMAREDDY (G)	OPEN FIELD	30 Sq. mt.	TOMATO, BRINJAL, CURRY LEAVE	3 KGS	School's own initiative
121	Kamareddy	RAMAREDDY	ZPHS MADDIKUNTA	OPEN FIELD	25 Sq Mt	TAMOTO, BEANS	2 KGS	School's own initiative
122	Kamareddy	Tadwai	PS Brahmajiwadi	Open field	15 sq mt	Tomato,green chilli,lady finger	2 Kg	School's own initiative
123	Kamareddy	Tadwai	PS Brahmanpally	Open field	10 sq mt	Tomato,green chilli,brinjal,Beans	1 Kg	School's own initiative
124	Kamareddy	Tadwai	PS Chandapoor	Open field	15 sq mt	Tomato,green chilli,brinjal	2 Kg	School's own initiative
125	Kamareddy	Tadwai	PS Chandapoor	Open field	10 sq mt	Tomto,Musterd green,brinjal	1 Kg	School's own initiative
126	Kamareddy	Tadwai	PS Kalojiwadi	Open field	15 sq mt	Tomato,lady finger,cucmber	2 Kg	School's own initiative
127	Kamareddy	Tadwai	PS Karadpally	Open field	20 sq mt	Tomato,green chilli,lady finger	3 Kg	School's own initiative
128	Kamareddy	Tadwai	PS Nandiwada	Open field	10 sq mt	Tomto,Musterd green,brinjal,beans	1 Kg	School's own initiative
129	Kamareddy	Tadwai	PS Peermaikunta (T)	Open field	15 sq mt	Tomato,green chilli,lady finger	2 Kg	School's own initiative
130	Kamareddy	Tadwai	UPS Sangojiwadi	Open field	10 sq mt	Tomato,lady finger,cucmber	1 Kg	School's own initiative

131	Kamareddy	Tadwai	UPS Santaipet	Open field	15 sq mt	Tomato,green chilli,lady finger	2 Kg	School's own initiative
132	Kamareddy	Tadwai	Z.P.H.S Brahman pally	Open field	20 sq mt	Tomato,green chilli,lady finger,Beans	3 Kg	School's own initiative
133	Kamareddy	Tadwai	Z.P.H.S Chityal	Open field	15 sq mt	Tomato,Musterd green,brinjal	2 Kg	School's own initiative
134	Kamareddy	Tadwai	Z.P.H.S Errapahad (B)	Open field	20 sq mt	Tomato,lady finger,cucumber	3 Kg	School's own initiative
135	Kamareddy	Tadwai	Z.P.H.S Karadpally	Open field	15 sq mt	Tomato,green chilli,brinjal	2 Kg	School's own initiative
136	Kamareddy	Nagireddypet	MPPS Athmakur	Open field	10 sq mt	Tomato	1 kg	School's own initiative
137	Kamareddy	Nagireddypet	MPUPS Golilingala	Open field	15 sq mt	Menthi, Tomato	2 kg	School's own initiative
138	Kamareddy	Nagireddypet	MPUPS Wadalparthy	Open field	10 sq mt	Drumstick	1 Kg	School's own initiative
139	Kamareddy	Nagireddypet	ZPHS Athmakur	Open field	20 sq mt	Menthi	1 Kg	School's own initiative
140	Kamareddy	SADASHIVA NAGAR	UPS THIRMANPALLY	OPEN FIELD	20 sq mt	BRINZOL	1 KG	School's own initiative
141	Kamareddy	SADASHIVA NAGAR	UPS LINGAMPALLY	OPEN FIELD	6 GUNTALU(6534 Sq.ft)	VEGETABLES, TOMATO,BEENS, BRINZOL, LADY FINGER, ONION	10 KGS	Community, School's own initiative
142	Kamareddy	SADASHIVA NAGAR	MPPS ADLOOR YELLAREDDY	OPEN FIELD	10 Sq Mt	KORIYANDRAM, MENTAM	1 KG	School's own initiative
143	Kamareddy	SADASHIVA NAGAR	MPPS HW ADLOOR YELLAREDDY	OPEN FIELD	10 Sq Mt	BRINJAL, TAMATO, GREEN CHILLI	3 KGS	School's own initiative
144	Kamareddy	SADASHIVA NAGAR	MPPS JANGAON	OPEN FIELD	10 Sq Mt	SPINAZ,	1 KG	School's own initiative
145	Kamareddy	SADASHIVA NAGAR	MPPS AMARLABANDA	OPEN FIELD	15 sq mt	GREEN CHILLI, TAMATO	2 KGS	School's own initiative
146	Kamareddy	SADASHIVA NAGAR	ZPHS SADASHIVA NAGAR	OPEN FIELD	20 Sq Mt	TAMATO, GONGURA	2 KGS	School's own initiative
147	Kamareddy	SADASHIVA NAGAR	ZPHS MARKAL	OPEN FIELD	25 Sq Mt	TAMATO	1 KG	School's own initiative
148	Kamareddy	SADASHIVA NAGAR	ZPHS KUPRIYAL	OPEN FIELD	25 Sq Mt	TAMATO, CHIKKUDU	2 KGS	School's own initiative
149	Kamareddy	SADASHIVA NAGAR	TS MODEL SCHOOL	OPEN FIELD	50 Sq Mt	BRINJAL, TAMATO	5 KGS	School's own initiative
150	Kamareddy	GANDHARI	MPPS BHURGUL	Open field	250 Sq Mt	TAMATO, MIRCHI, BENDA, VANKAYA, BIRAKAYA, PALAKURA, CHIKKUDU	15 Kgs	School own initiative
151	Kamareddy	GANDHARI	MPPS MADHAVPALLY	Open field	150 Sq Mt	TAMATO, MIRCHI, BENDA, VANKAYA, BIRAKAYA, PALAKURA, CHIKKUDU	8 Kgs	School own initiative

152	Kamareddy	GANDHARI	MPPS KARAKWADI	Open field	150 Sq Mt	TAMATO, MIRCHI, BENDA, VANKAYA, BIRAKAYA, PALAKURA, CHIKKUDU	8 Kgs	School own initiative
153	Kamareddy	GANDHARI	MPUPS THIPPARAM	Open field	100 Sq Mt	TAMATO, MIRCHI, BENDA, VANKAYA, BIRAKAYA, PALAKURA, CHIKKUDU	5 Kgs	School own initiative
154	Kamareddy	GANDHARI	MPUPS VANDRIKAL	Open field	150 Sq Mt	TAMATO, MIRCHI, BENDA, VANKAYA, BIRAKAYA, PALAKURA, CHIKKUDU	6 Kgs	School own initiative
155	Kamareddy	GANDHARI	ZPHS PETSANGAM	Open field	250 Sq Mt	TAMATO, MIRCHI, BENDA, VANKAYA, BIRAKAYA, PALAKURA, CHIKKUDU	12 Kgs	School own initiative
156	Kamareddy	GANDHARI	MPPS VANDRIKAL T	Open field	120 Sq Mt	TAMATO, MIRCHI, BENDA, VANKAYA, BIRAKAYA, PALAKURA, CHIKKUDU	5 Kgs	School own initiative
157	Kamareddy	GANDHARI	ZPHS GANDIVET	Open field	200 Sq Mt	TAMATO, MIRCHI, BENDA, VANKAYA, BIRAKAYA, PALAKURA, CHIKKUDU	10 Kgs	School own initiative
158	Kamareddy	GANDHARI	MPPS EKKAKUNTA	Open field	120 Sq Mt	TAMATO, MIRCHI, BENDA, VANKAYA, BIRAKAYA, PALAKURA, CHIKKUDU	6 Kgs	School own initiative
159	Kamareddy	GANDHARI	MPPS NARSAPOOR	Open field	100 Sq Mt	TAMATO, MIRCHI, BENDA, VANKAYA, BIRAKAYA, PALAKURA, CHIKKUDU	5 Kgs	School own initiative
160	Kamareddy	GANDHARI	ZPHS GOURARAM	Open field	120 Sq Mt	TAMATO, MIRCHI, BENDA, VANKAYA, BIRAKAYA, PALAKURA, CHIKKUDU	5 Kgs	School own initiative
161	Kamareddy	GANDHARI	MPUPS MUDHOLLI	Open field	120 Sq Mt	TAMATO, MIRCHI, BENDA, VANKAYA, BIRAKAYA, PALAKURA, CHIKKUDU	5 Kgs	School own initiative

162	Karimnagar	CHIGURUM AMID	ZPHS REKONDA	OPEN FIELD	501.87	TOMOTO, BRINJAL, CHILLIES, BOTTLE GOURD	TOMOTOS- 6KG, BINJAL- 2.5KG CHILLIES- 1.5KG	COMMUNITY, SCHOOL OWN INITIATIVE
163	Karimnagar	CHOPPADA NDI	ZPHS RAGAMPETA	OPEN FIELD	505.89	TOMOTO, BRINJAL, CHILLIES, BOTTLE GOURD	TOMOTOS- 6KG, BINJAL- 2.5KG CHILLIES- 1.5KG	COMMUNITY, SCHOOL OWN INITIATIVE
164	Karimnagar	CHOPPADA NDI	TSMS RUKMAPUR	OPEN FIELD	303.53	TOMOTO, BRINJAL, BOTTLE GOURD, LADIES FINGERS,	TOMOTOS- 4KG,	COMMUNITY, SCHOOL OWN INITIATIVE
165	Karimnagar	ELLANDAKUNTA	MPPS CHINNAKOMATIPALLY	OPEN FIELD	121 SQMTR	TOMOTO, BRINJAL, CHILLIES, BOTTLE GOURD ETC.,	TOMOTOS- 6KG, BINJAL- 2.5KG CHILLIES- 1.5KG	COMMUNITY, SCHOOL OWN INITIATIVE
166	Karimnagar	GANGADHARA	ZPHS UPPERMALLIAL	OPEN FIELD	121 SQMTR	TOMOTO, BRINJAL, CHILLIES, BOTTLE GOURD ETC.,	15 KG	COMMUNITY, SCHOOL OWN INITIATIVE
167	Karimnagar	GANNERUVARAM	MPPS JANGAPALLY	OPEN FIELD	121 SQMTR	TOMOTO, BRINJAL, CHILLIES, BOTTLE GOURD ETC.,	15 KG	COMMUNITY, SCHOOL OWN INITIATIVE
168	Karimnagar	HUZURABAD	ZPHS PEDDAPAPAIHPALLY	OPEN FIELD	121 SQMTR	TOMOTO, BRINJAL, CHILLIES, BOTTLE GOURD ETC.,	15 KG	COMMUNITY, SCHOOL OWN INITIATIVE
169	Karimnagar	HUZURABAD	ZPHS KANDUGULA	OPEN FIELD	121 SQMTR	TOMOTO, BRINJAL, CHILLIES, BOTTLE GOURD ETC.,	15 KG	COMMUNITY, SCHOOL OWN INITIATIVE
170	Karimnagar	JAMMIKUNTA	ZPHS BUZUNUR	OPEN FIELD	121 SQMTR	TOMOTO, BRINJAL, CHILLIES, BOTTLE GOURD ETC.,	20 KG	COMMUNITY, SCHOOL OWN INITIATIVE
171	Karimnagar	KARIMNAGAR RURAL	ZPHS. CHAMANAPALLY	OPEN FIELD	25 SQ.MTRS	Corianders	500 Grams	School
172	Karimnagar	KARIMNAGAR URBAN	GHS. DHANGARWADI	OPEN FIELD	25 SQ.MTRS	Corianders	500 Grams	School
173	Karimnagar	KOTHAPALLY	MPPS. REKURTHI	OPEN FIELD	50 SQ.MTRS	Vegetables	1 Kg	School
174	Karimnagar	MANAKONDUUR	TSMS POCHAMPALLY	OPEN FIELD	50 SQ.MTRS	Vegetables	1 Kg	School
175	Karimnagar	RAMADUGU	ZPHS RUDRARAM	OPEN FIELD	50 SQ.MTRS	Vegetables	1 Kg	School
176	Karimnagar	SAIDAPUR	TSMS SOMARAM	OPEN FIELD	121 SQMTR	TOMOTO, BRINJAL, CHILLIES, BOTTLE GOURD ETC.,	20 KG	COMMUNITY, SCHOOL OWN

								INITIATIVE
177	Karimnagar	SHAKARAPATNAM	ZPHS MOLANGUR	OPEN FIELD	121 SQMTR	TOMOTO, BRINJAL, CHILLIES, BOTTLE GOURD ETC.,	32 KG	COMMUNITY, SCHOOL OWN INITIATIVE
178	Karimnagar	THIMMAPUR	ZPHS MALLAPUR	OPEN FIELD	121 SQMTR	TOMOTO, BRINJAL, CHILLIES, BOTTLE GOURD ETC.,	50 KG	COMMUNITY, SCHOOL OWN INITIATIVE
179	Karimnagar	THIMMAPUR	ZPHS VACHUNUR	OPEN FIELD	121 SQMTR	TOMOTO, BRINJAL, CHILLIES, BOTTLE GOURD ETC.,	60 KG	COMMUNITY, SCHOOL OWN INITIATIVE
180	Karimnagar	VEENAVANKA	ZPHS VEENAVANKA	OPEN FIELD	121 SQMTR	TOMOTO, BRINJAL, CHILLIES, BOTTLE GOURD ETC.,	45 KG	COMMUNITY, SCHOOL OWN INITIATIVE
181	Khammam	Bonakal	ZPHS RAVINUTHALA	Open field	100.sq meters	BOTTLE GROUND	1.5 kg	School's own initiative
182	Khammam	Enkooor	MPPS SRIRAMPURAMTHANDA	Open field	YES 250 YARADS	LADY FINGER	2 kg	School's own initiative
183	Khammam	Enkooor	MPPS B RAGHAVAPURAM	Open field	150 sqmtrs	LEAFY VEGITABLES	½ kg	School's own initiative
184	Khammam	Enkooor	MPPS KESUPALLI COLONY	Open field	500 sqmtrs	TOMATO & LEAFY VEGITABLES	2 kg	School's own initiative
185	Khammam	Enkooor	MPUPS BHADRUTHANDA	Open field	200 sqmtrs	GONGURA	¼ kg	School's own initiative
186	Khammam	Enkooor	MPPS INDIRANAGAR	Open field	YES, 14 SQFTS	BITTER GROUND	1 kg	School's own initiative
187	Khammam	Khammam (Rural)	PS. CHINATHANDA	Open field	150 sqmtrs	LEAFY VEGITABLES	¼ kg	School's own initiative
188	Khammam	Khammam (Rural)	PS. NAIDUPETA	Open field	500 sqmtrs	DRUM STICKS	½ kg	School's own initiative
189	Khammam	Khammam (Rural)	PS. BARUGUEDEM	Open field	KUNTA	SORAKAYA	1.5 kg	School's own initiative
190	Khammam	Khammam (Rural)	PS. NARISMHAPURAM	Open field	200 YARADS	DONDA	1 kg	School's own initiative
191	Khammam	Khammam (Rural)	PS. KOTANARAYANAPURAM	Open field	1 CENT	CURRY LEAVES, VANGA	1 kg	School's own initiative
192	Khammam	Khammam (Rural)	PS. POLEPALLI	Open field	100sq mts	LEAFY VEGITABLES	½ kg	School's own initiative
193	Khammam	Khammam (Rural)	PS. AREMPULA	Open field	250 sqmtrs	BEENS	¾ kg	School's own initiative
194	Khammam	Khammam (Rural)	UPS. KASNATHANDA	Open field	400 sqmtrs	CUCUMBER	2 kg	School's own initiative
195	Khammam	Khammam (Rural)	UPS. POLESETTIGUEDEM	Open field	YES 100YARADS	LEAFY VEGITABLES	½ kg	School's own initiative

196	Khammam	Khammam (Rural)	ZPHS MUTHAGUDEM	Open field	YES 250 YARADS	RIDGE GOURD	2 kg	School's own initiative
197	Khammam	Khammam (Rural)	ZPSS AREMULA	Open field	100sq mts	LEAFY VEGETABLES	½ kg	School's own initiative
198	Khammam	Kusumanchi	MPPS KUSUMANCHI	Open field	500 sqmtrs	TOMATO	1.5 kg	School's own initiative
199	Khammam	Madhira	P.S. ALLINAGARAM	Open field	150 sqmtrs	CHIKUDU	¾ kg	School's own initiative
200	Khammam	Madhira	CPS MADUPALLI	Open field	150 sqmtrs	BRINJAL	1 kg	School's own initiative
201	Khammam	Madhira	PS MAHADEVAPURAM	Open field	500 sqmtrs	CUCUMBER	2 kg	School's own initiative
202	Khammam	Madhira	P.S.JILUGUMADU	Open field	200 sqmtrs	DRUM STICKS	1 kg	School's own initiative
203	Khammam	Madhira	P.S.MALLARAM(HW)	Open field	500 sqmtrs	BOTTLE GROUD	2 kg	School's own initiative
204	Khammam	Madhira	CPS.DENDUKURU	Open field	250 sqmtrs	LEAFY VEGETABLES	1 kg	School's own initiative
205	Khammam	Madhira	PS.MATOORPETA	Open field	200 sqmtrs	CHIKUDU	1 kg	School's own initiative
206	Khammam	Madhira	PS.SIRIPURAM(HW)	Open field	200 sqmtrs	BRINJAL	1.5 kg	School's own initiative
207	Khammam	Madhira	UPS CHILUKURU	Open field	150 sqmtrs	CUCUMBER	2 kg	School's own initiative
208	Khammam	Madhira	UP.S.KHAMMAMPADU	Open field	200 sqmtrs	TOMATO	1 kg	School's own initiative
209	Khammam	Madhira	UPS.NAGAVARAPADU	Open field	200 sqmtrs	LEAF VEGETABLES	¾ kg	School's own initiative
210	Khammam	Madhira	UPS.MALLARAM	Open field	200 sqmtrs	BITTER GROUD	1 kg	School's own initiative
211	Khammam	MUDIGONDA	MPPS MADHAPURAM	Open field	YES/500.SQ ADDS	BRINJAL,L	1.5 kg	School's own initiative
212	Khammam	MUDIGONDA	MPPS OLD LAXMIPURAM	Open field	YES/100.SQ ADDS	BOTTLE GROUD	1.5 kg	School's own initiative
213	Khammam	MUDIGONDA	MPPS MITTAGUDEM	Open field	YES/300.SQ ADDS	TOMATO	2 kg	School's own initiative
214	Khammam	MUDIGONDA	MPPS PENDUREGUPALLI SC	Open field	YES/200.SQ ADDS	LEAF VEGETABLES/ YES	½ kg	School's own initiative
215	Khammam	NELAKONDA APALLY	MPPS RAJESWARAPURAM	Open field	2 KUNTALU	LADYFINGER	1 kg	School's own initiative
216	Khammam	NELAKONDA APALLY	MPPS NACHEPALLI	Open field	2 KUNTALU	GONGURA	¼ kg	School's own initiative
217	Khammam	NELAKONDA APALLY	MPPS PANDAVA CHALAKA	Open field	2 KUNTALU	ALL LEAFY VEGETABLES	½ kg	School's own initiative
218	Khammam	NELAKONDA APALLY	MPPS NACHEPALLI	Open field	500 sq. Mts	LADYFINGER, CUKUMBAR	2 kg	School's own initiative
219	Khammam	NELAKONDA APALLY	MPPS PANDAVA CHALAKA	Open field	350 sq. mts	SORREL LEAVES,	3 kg	School's own

						LADYFINGER, DRAMSTICKS		initiative
220	Khammam	NELAKOND APALLY	MPPS BODULABANDA	Open field	150 sq. mts	TOMATO,BITT ERGOURT	1.5 kg	School's own initiative
221	Khammam	NELAKOND APALLY	MPPS MANDRAJUPALLI	Open field	430 sq. mts	GREENCHILLI, TAMATO	1 kg	School's own initiative
222	Khammam	NELAKOND APALLY	MPPS APPALA NARSIMHAPURAM	Open field	250 sq. mts	CUKUMBAR,T AMATO,LADY FINGER	2 kg	School's own initiative
223	Khammam	NELAKOND APALLY	MPPS RAVIGUEDEM	Open field	100 sq. Mts	DRAMSTICKS, TAMATO,BOT TILGOURD	1 kg	School's own initiative
224	Khammam	NELAKOND APALLY	MPPS BHIRAVUNIPALLI	Open field	125 sq. mts	BASELLAALB A,TAMOTA,LA DYFINGER	1 kg	School's own initiative
225	Khammam							
226	Khammam	NELAKOND APALLY	MPPS CHENNARAM	Open field	200 sq. Mts	TAMOTA,BASE LLAALBA,DRA MSTICKS	2 kg	School's own initiative
227	Khammam	NELAKOND APALLY	MPUPS MOTAPURAM	Open field	500 sq. Mts	BRINJAL,BITT ER GOURD	3 kg	School's own initiative
228	Khammam	NELAKOND APALLY	MPUPS KORATLAGUEDEM	Open field	180 sq. Mts	BOTTLE GOURD,CUCU MBER,TAMOT A	5 kg	School's own initiative
229	Khammam	NELAKOND APALLY	MPUPS SADASIVAPURAM	Open field	260 sq. Mts	DRUMSTICK,T AMATO,GREE N CHILLI	2 kg	School's own initiative
230	Khammam	NELAKOND APALLY	ZPHS NACHEPALLI	Open field	190 sq. Mts	DRUMSTICK,B OTTLE GOURD,TAMO TA	4 kg	School's own initiative
231	Khammam	NELAKOND APALLY	ZPHS BHIRAVUNIPALLI	Open field	260 sq. mts	CHINESE SPINACH,TAM OTO,CURRY LEAVES	1.5 kg	School's own initiative
232	Khammam	RAGHUNAD HAPALEM	PS REGULA CHALAKA	Open field	YES,100 YARDS	LEAFY VEGITABLES	½ kg	School's own initiative
233	Khammam	RAGHUNAD HAPALEM	PS VR BANZARA	Open field	YES,100 YARDS	GONGURA,USI RI,	¼ kg	School's own initiative
234	Khammam	RAGHUNAD HAPALEM	PS KOYA CHALAKA	Open field	YES,100 YARDS	LADY FINGER	1 kg	School's own initiative
235	Khammam	RAGHUNAD HAPALEM	PS MUTHYALA	Open field	YES,14 SQFTS	CURRY LEAVES,VANG A	1 kg	School's own initiative
236	Khammam	RAGHUNAD HAPALEM	ZPSS CHIMMAPUDI	Open field	YES,250 YARDS	BRINJAL, CURRY LEAVES	1 kg	School's own initiative
237	Khammam	M.P T.PALEM	PS Jagannadapuram	Open field	300 sq. Mts	CHIKKUDU ,SORA	2 kg	School's own initiative
238	Khammam	Vemsoor	MPPS VEMSOOR	Open field	150 sq.mts	CUCUMBER	1 kg	School's own initiative
239	Khammam	Vemsoor	MPUPS LACHANNAGUEDEM	Open field	500. sq mts	LEAFY VEGITABLES	¼ kg	School's own initiative
240	Khammam	Vemsoor	MPUPS BEERAPALLI	Open field	90 Sq	TOMATO	1 kg	School's own initiative
241	Khammam	Vemsoor	MPPS LAKSHMINARAYANA	Open field	190 sq. mts	BOTTLE GROUD	1.5 kg	School's own initiative
242	Khammam	Vemsoor	MPPS KANDUKURU	Open field	230 sq. Mts	BRINJAL	1 kg	School's own initiative
243	Khammam	Vemsoor	MPPS BHARANIPADU	Open field	120 Sq	LADY FINGER	1.5 kg	School's own initiative

244	Khammam	YERRUPALEM	MPPS BHEEMAVARAM	Open field	10 CENTS	LEAFY VEGITABLES	½ kg	School's own initiative
245	Khammam	YERRUPALEM	MPUPS MULUGUMADU	Open field	50 MTS	BITTER GOURD	¾ kg	School's own initiative
246	Khammam	YERRUPALEM	MPPS PEGALLAPADU HW	Open field	1 CENT	TAMATTO,BRIJAL,AKUKURALU,BITTER GOURD	2 kg	School's own initiative
247	Khammam	YERRUPALEM	TSWREIS HS YERRUPALEM	Open field	HALF ACERA	TAMATTO,BRIJAL,AKUKURALU,BITTER GOURD	3 kg	School's own initiative
248	Khammam	YERRUPALEM	KGBV YERRUPALEM	Open field	1CENT	TAMATTO,BRIJAL,AKUKURALU,BITTER GOURD	2 kg	School's own initiative
249	Medak	Shivampet	MPPS DonthiVenugopal Nagar	open field	600 SqMts	1.Brinjal,2.Tamato, 3.sorakaya,4.Mirchi 5.Chikudu and Etc.,	20 Kg	School's own initiative
250	Medak	Toopran	MPPS Immampur	open field	100 SqMts	Palakura(Spinach)	15 Kg	School's own initiative
251	Medak	Toopran	MPPS KoneypallyP.T	open field	400 Sq.Mts	Mulangi, sorakaya	5 Kg	School's own initiative
252	Medak	Alladurgu	MPPS Chilvera	open field	400 Sq.Mts	TamatoMulangi, sorakaya	5 Kg	School's own initiative
253	Nalgonda	Chinthapally	TS Model School, Chinthapally	Openfield	180	Brinjal,Lady finger	4 Kgs	School and SHG Group
254	Nalgonda	Chinthapally	ZPHS Kurmed	Openfield	65	Brinjal,Lady finger Tamoto	3 Kgs	School and SHG Group
255	Nalgonda	Kattangur	MPPS Pittampally	Open Field	10	Bottle Gaurd	2 Kgs	School's own initiative
256	Nalgonda	Kattangur	MPPS Duginavelly	Open Field	20	Bottle Gaurd	2 Kgs	School's own initiative
257	Nalgonda	Kattangur	MPPS Perindevigudem	Open Field	15	Tomato,Brinjal	2 Kgs	School's own initiative
258	Nalgonda	Kondamallepally	MPPS Kondamallepally	Open Field	55	Tamato, Brinjal	3 Kgs	School's own initiative
259	Nalgonda	Kondamallepally	MPPS Chennammenipally	Open Field	20	Bottlegaurd, Ladyfinger	2 Kgs	School's own initiative
260	Nalgonda	Kondamallepally	MPPS Chinthakuntla	Open Field	25	Tamato Bottelegaurd	2 Kgs	School's own initiative
261	Nalgonda	Nakrekal	MPPS Nellibanda	Open Field	25	Brinjal, Tamato, chillies, Bottlegaurd	2 Kgs	School's own initiative
262	Nalgonda	Narketpally	MPPS Kothagudem	Open field	25	Tamato, Bottle Guard	3 Kgs	School's own initiative
263	Nalgonda	Narketpally	ZPHS Ammanabole	Open field	45	Lady finger, Tamato	5 Kgs	School's own initiative
264	Nalgonda	Narketpally	ZPHS Shapally	Open field	75	Tamato, Bottle Guard	5 Kgs	School's own initiative
265	Nalgonda	Narketpally	ZPHS Mandra	Open field	65	Tamato	5 Kgs	School's own initiative
266	Nalgonda	Narketpally	ZPHS B Velemla	Open field	60	Brinjal	5 Kgs	School's own initiative

267	Nalgonda	Nidmanur	ZPHS Mukundapuram	Open Field	210	Tamato, Bottle gourd, Brinjal, Ladyfinger	8 Kgs	School's own initiative
268	Peddapally	Julapally	ZPHS Peddapur	Open field	21781.6	CORRIENDER LEAVES	2	School's own initiative)
269	Peddapally	Julapally	ZPHS Wadkapur	Open field	10890.8	Curry Leaves	4	School's own initiative)
270	Peddapally	Julapally	ZPHS Kummurikunta	Open field	32672.4	BEANS	3	School's own initiative)
271	Peddapally	Julapally	TSMS Julapalli	Open field	21781.6	Curry Leaves	5	School's own initiative)
272	Peddapally	Odela	KGBV Odela	Open field	110	BEANS, TOMATO & CORRIENDER LEAVES	16	Suchitra Educational Society
273	Peddapally	Peddapalli	ZPHS Nittoor	Open field	21781.6	Curry Leaves	2	School's own initiative)
274	Peddapally	Peddapalli	ZPHS Maredugonda	Open field	21781.6	Curry Leaves	1	School's own initiative)
275	Peddapally	Anthergoan	MPPS LAMBADI THANDA	Open field	50	Curry Leaves	1.5	School's own initiative)
276	Peddapally	Anthergoan	MPPS MADDIRIYALA	Open field	100	Curry Leaves	1	School's own initiative)
277	Rajanna	ELLANTHAKUNTA	MPPS KANDIKATKOOR- HW	OPEN FIELD	10 Sq.Mts	BOTTLE GARDEN	2KGS	Schools own initiative
278	Rajanna	BOINPALLI	MPPS NARSINGA PUR	OPEN FIELD	28 Sq. Mts	tomato, sorakaya, kothimeera	3 kgs	Schools own initiative
279	Rajanna	BOINPALLI	MPPS NELOJIPALLI	OPEN FIELD	25 Sq. Mts	tomato, sorakaya, kothimeera	4 Kgs	Schools own initiative
280	Rajanna	BOINPALLI	MPPS MANWADA	OPEN FIELD	20 Sq. Mts	tomato, sorakaya, munaga	2 Kgs	Schools own initiative
281	Rajanna	BOINPALLI	MPPS STAMBAM PALLI	OPEN FIELD	15 Sq. Mts	tomato, sorakaya, kothimeera	1.5 Kgs	Schools own initiative
282	Rajanna	BOINPALLI	ZPHS NARSINGAPUR	OPEN FIELD	30 Sq. Mts	tomato, sorakaya, kothimeera	4 Kgs	Schools own initiative
283	Rajanna	KONARAOPET	ZPHS MAMIDIPALLY	OPEN FIELD	200 Sq.Mts	Brinjal, Lady Finger, Kothimeer, Tomato, Beens, Bottle Guard, Mirchi, Leafs, Munaga	5 kg	Schools own initiative
284	Rajanna	KONARAOPET	ZPHS NIZAMABAD	OPEN FIELD	85 Sq.Mts	Brinjal, Lady Finger	2 kg	Schools own initiative
285	Rajanna	KONARAOPET	ZPHS VATTIMALLA	OPEN FIELD	101 Sq.Mts	Brinjal, Lady Finger	2 kg	Schools own initiative
286	Rajanna	SIRICILLA	MPPS IPPALAPALLY	OPEN FIELD	200Sq.Mts	Tamato, green chilli, etc.	2 Kgs.	Schools own initiative
287	Rajanna	SIRICILLA	MPUPS RAJIVNAGAR	OPEN FIELD	350 Sq.Mts	bringal, ladyfinger, etc.	3 Kgs.	Schools own initiative
288	Rajanna	SIRICILLA	PS CHANDRAMPET	OPEN FIELD	250 Sq.Mts	cucumber, tamato, etc.	2 Kgs.	Schools own initiative
289	Rajanna	THANGALLAPALLY	MPPS BADDENAPALLY	OPEN FIELD	157 Sq.Mts	Bringal, Ladyfinger, etc.	5 Kg	Schools own

								intitative
290	Rajanna	THANGALL APALLY	MPPS GOPAL RAO PALLY	OPEN FIELD	204 Sq.Mts	Cucumber, Tamato, etc.	4 Kg	Schools own intitative
291	Rajanna	THANGALL APALLY	MPPS JILLELLA	OPEN FIELD	170 Sq.Mts	Ladyfinger, Bringal, etc.	6 Kg	Schools own intitative
292	Rajanna	THANGALL APALLY	MPPS YERRAGUNTAPALLY	OPEN FIELD	161 Sq.Mts	Green Chilli, Cubumber, etc.	4 Kg	Schools own intitative
293	Rajanna	THANGALL APALLY	MPUPS ANKUSAPUR	OPEN FIELD	167 Sq.Mts	Cucumber, Tamato, etc.	5Kg	Schools own intitative
294	Rajanna	THANGALL APALLY	MPUPS GANDILACHAPET	OPEN FIELD	153 Sq.Mts	Tamato, Bringal, Coriander, etc.	4 Kg	Schools own intitative
295	Rajanna	THANGALL APALLY	ZPHS OBULAPUR	OPEN FIELD	147 Sq.Mts	Bringal, Ladyfinger, etc.	6 Kg	Schools own intitative
296	Rajanna	THANGALL APALLY	ZPHS THADUR	OPEN FIELD	152 Sq.Mts	Ladyfinger, Tamato, etc.	5 Kg	Schools own intitative
297	Rajanna	VEMULAWADA	ZPHS (G) VEMULAWADA	OPEN FIELD	20 Sq.Mts	BOTTLE GARDEN, CHIKKUDU	2 KGS	Schools own intitative
298	Rajanna	YELLARED DYPET	MPPS BAKURPALLY	OPEN FIELD	30 Sq.Mts	Tamata, Leaf	2Kgs	Schools own intitative
299	Rajanna	VEERNAPALLY	MPPS BABAICHERUVU THANDA	OPEN FIELD	25 Sq.Mts	Tamata, Leaf, Beans	3Kgs	Schools own intitative
300	Rajanna	VEERNAPALLY	MPPS A/N VEERNAPALLY	OPEN FIELD	10 Sq.Mts	chikkudu, Beans	1.5Kgs	Schools own intitative
301	Rajanna	VEERNAPALLY	MPUPS MADDIMALLA	OPEN FIELD	10 Sq.Mts	leaf, Beans, Tamata	2Kgs	Schools own intitative
302	Rajanna	VEERNAPALLY	MPPS GARJANAPALLY THANDA	OPEN FIELD	30 Sq.Mts	Tamata, Leaf, Beans	3Kgs	Schools own intitative
303	Rajanna	VEERNAPALLY	MPUPS RANGAMPET	OPEN FIELD	25 Sq.Mts	leaf, Beans, Tamata	2Kgs	Schools own intitative
304	Rajanna	MUSTABAD	MPPS AVUNUR	OPEN FIELD	110 Sq.Mts	Tamata, Palakura, Vankaya, Kothimera	2 kgs	Schools own intitative
305	Rajanna	MUSTABAD	MPPS CHEEKOD	OPEN FIELD	115 Sq.Mts	Tamata, Palakura, Vankaya, Kothimera	1 kg	Schools own intitative
306	Rajanna	MUSTABAD	MPUPS MADDIKUNTA	OPEN FIELD	130 Sq.Mts	Tamata, Vankaya, Kothimera	1.5 kg	Schools own intitative
307	Rajanna	MUSTABAD	MPPS POTHGAL	OPEN FIELD	110 Sq.Mts	Palakura, Vankaya, Kothimera	2 kg	Schools own intitative
308	Rajanna	MUSTABAD	MPUPS CHIPPALPALLY	OPEN FIELD	100 Sq.Mts	Palakura, Vankaya, Kothimera	1.5 kg	Schools own intitative
309	Rajanna	MUSTABAD	ZPHS B POTHGAL	OPEN FIELD	140 Sq.Mts	Tamata, Palakura, Vankaya, Kothimera	2.kg	Schools own intitative
310	Rajanna	MUSTABAD	ZPHS G POTHGAL	OPEN FIELD	12 Sq.Mts	Palakura, Kothimera	1 kg	Schools own intitative
311	Rajanna	MUSTABAD	ZPHS CHEEKOD	OPEN FIELD	120 Sq.Mts	Tamata, Palakura, Vankaya, Kothimera	1kg	Schools own intitative
312	Rangareddy	AMANGAL	MPPS NACHUGUTTATANDA	Open Field	20 MTRS	Tamato ,vankaya	2	MDM Agencies
313	Rangareddy	AMANGAL	MPPS DAYAL BODU TANDA	Open Field	20 MTRS	Tamato ,vankaya	3	MDM Agencies
314	Rangareddy	CHEVELLA	MPPS DEVUNIYERRAVALLY	Open Field	100 SQ	TAMOTA	5	MDM Agencies

315	Rangareddy	HAYATHNAGAR	CPS HAYATHNAGAR (BAGATH)	Open Field	100 SQ	TAMOTA	2	MDM Agencies
316	Rangareddy	HAYATHNAGAR	ZPHS HAYATHNAGAR	Open Field	100 SQ	VEGETABLES	4	MDM Agencies
317	Rangareddy	HAYATHNAGAR	CPS SAHEBNAGAR	Open Field	100 SQ	VEGETABLES	3	MDM Agencies
318	Rangareddy	HAYATHNAGAR	PS ANMAGAL	Open Field	100 SQ	VEGETABLES	5	MDM Agencies
319	Rangareddy	KADTHAL	MPPS RAVICHEDU	Open Field	100 SQ	VEGETABLES	4	MDM Agencies
320	Rangareddy	KADTHAL	MPPS PADMAVATI COLONY	Open Field	100 SQ	VEGETABLES	5	MDM Agencies
321	Rangareddy	Moinabad	PS SURANGAL	Open Field	100SQ	VEGETABLES	5	MDM Agencies
322	Rangareddy	Moinabad	PS VEERANNAPET	Open Field	50SQ	VEGETABLES	3	MDM Agencies
323	Rangareddy	Moinabad	PS JEEVANGUDA	Open Field	50SQ	VEGETABLES	3	MDM Agencies
324	Rangareddy	Moinabad	PS APPOJIGUDA	Open Field	55 sq yards	Chikkudu and Sorakaya	5	MDM Agencies
325	Rangareddy	Moinabad	PS MOTHUKUPALLY	Open Field	25 sq yards	Chikkudu	3	MDM Agencies
326	Rangareddy	Moinabad	PS VEERANNAPET	Open Field	55 sq yards	Tamoto ,vankaya and mirchi	3	MDM Agencies
327	Rangareddy	Moinabad	ZPHS KANAKAMAMIDI	Open Field	25 sq yards	Mentham,Gongu ra and Kothimeera	2	MDM Agencies
328	Rangareddy	SHABAD	ZPHS POTHUGAL	Open Field	250	vegetables	3	schools own initiative
329	Rangareddy	FAROOQNAGAR	MPPS KASIREDDYGUDA	Open Field	100	Brinjal,Tomoto	5	schools own initiative
330	Rangareddy	FAROOQNAGAR	MPPS THIMMAIPALLY	Open Field	100	Brinjal,Tomoto	5	schools own initiative
331	Rangareddy	FAROOQNAGAR	MPPS CHATTANPALLY	Open Field	100	Brinjal,Tomoto	5	schools own initiative
332	Rangareddy	KESHAMPET	MPPS DEVUNIGUDITANDA	Open Field	12 Sq Mts	BRINJAL,TAMOTA,LADIES FINGER	15	schools own initiative
333	Rangareddy	KESHAMPET	MPPS RAGYA TANDA	Open Field	04 Sq Mts	TAMOTA	5	schools own initiative
334	Rangareddy	TALAKONDAPALLY	MPPS VENKATAPUR	Open Field	500	LADIES FINGER,BRINJAL	4	School's own initiative
335	Rangareddy	TALAKONDAPALLY	MPPS GOURIPALLY	Open Field	450	BRINJAL,CUCUMBER	3	School's own initiative
336	Rangareddy	TALAKONDAPALLY	MPUPS LINGARAOPALLY	Open Field	500	CUCUMBER,LADIES FINGER,GREEN LEAVES	5	School's own initiative
337	Rangareddy	TALAKONDAPALLY	MPUPS VENKATRAOPET	CONTAINER	740	LADIES FINGER,BRINJAL,GREEN LEAVES,GREEN NUTS	6	School's own initiative
338	Rangareddy	SHAMSHABAD	MPPS AIRPORT COLONY	Open Field	100MTS	VEGETABLES	5	School's own initiative
339	Rangareddy	SHAMSHABAD	MPPS G B THANDA	Open Field	20MTS	VEGETABLES	2	School's own initiative
340	Rangareddy	SHAMSHABAD	MPPS HUDA COLONY	Open Field	50MTS	VEGETABLES	2	School's own initiative
341	Rangareddy	SHAMSHABAD	TS MODEL SCHOOL	Open Field	50MTS	VEGETABLES	5	School's own initiative

342	Rangareddy	SHANKAR PALLY	PS KONDAKAL THANDA	Open Field	100SQ	BIRJAL, TAMATO, MIRCHI, LEAF VEGITABLES	10	School's own initiative
343	Rangareddy	SHANKAR PALLY	ZPHS KANAKAMAMIDI	Open Field	25 sq yards	Mentham, Gongu ra and Kothimeera		MDM Agencies
344	Warangal(U)	Dharmasagar	ZPHS Unikicherla	Open field		Spinach, Ladys' finger and Brinjal	3 kgs	Schools own initiative
345	Warangal(U)	Dharmasagar	MPSS Devunur	Open field		Brinjal and Banana	2 kgs	Schools own initiative
346	Warangal(U)	ELKATHURTHI	MPPS KOTHULANADUMA BC COLONY	Open Field	12000 sq.Mts	Tomato, Brinjal, Lady Finger, Guava	5 Kgs	School's own initiative
347	Warangal(U)	ELKATHURTHI	MPPS DAMERA SC COLONY	Open Field	500 sq.Mts	Tomato, Brinjal	2 Kgs	School's own initiative
348	Warangal(U)	HANAMKONDA	GGHS PETROL PUMP	Open Field	150 Sq. Meters	1).VANKAYYA, 2).GONGURA, 2).PUDINA 4).KOTHIMEERA, 5).MUNAGA, 6).ONION, 7).SHYAMAGADDA,	2 Kg per month	Schools Own Initiative
349	Warangal(U)	HANAMKONDA	MPPS PALIVELPULA	Open Field	100 Sq. Meter	1).VANKAYYA, 2).TOMATO, 3).KAKARA, 4).CHIKKUDU, 5).BHACHALI, 6).CABBEGE, 7).KOTHOMEERA,	2 Kg per month	Schools Own Initiative
350	Warangal(U)	HASANPARTHY	MPPS KOTHAPALLY	OPEN FIELD	500	VEGETABLE	2 KGs	School's own initiative
351	Warangal(U)	HASANPARTHY	UPS PEMBHARTHY	OPEN FIELD	800	VEGETABLE	4 KGs	School's own initiative
352	Warangal(U)	INAVOLE	-	NIL	NIL	NIL	NIL	NIL
353	Warangal(U)	KAMALAPUR	PS GUDUR	Open Field	150 Sq. Meters	Tamato, Sorakaya, Mirchi	2 Kg per month	Schools Own Initiative
354	Warangal(U)	KAMALAPUR	ZPHS KAMALAPUR (B)	Open Field	100 Sq. Meter	Tamato, Mirchi	2 Kg per month	Schools Own Initiative
355	Warangal(U)	KAZIPET	GHS SHYAMPET JAGEER	Open Field	150 Sq. Meters	1).VANKAYYA, 2).TOMATO, 3).KAKARA, 4).CHIKKUDU, 5).BHACHALI, 6).CABBEGE, 7).KOTHOMEERA, 8).KANDAGADDA	2 Kg per month	Schools Own Initiative
356	Yadadri	BOMMALAR AMARAM	ZPHS MARYALA	Open Filed	200	TOMATO, BRINJAL & BOTTLEGUARD,	10kg	SCHOOL'S OWN INITIATIVE
357	Yadadri	BOMMALAR AMARAM	ZPHS B.RAMARAM	Open Filed	150	LADY FINGERS, TOMATO & CHILLIES	5kg	SCHOOL'S OWN INITIATIVE
358	Yadadri	BOMMALAR AMARAM	ZPHS NAGINENIPALY	Open Filed	100	BRINJAL & TOMATO	3kg	SCHOOL'S OWN INITIATIVE
359	Yadadri	BOMMALAR AMARAM	MPPS MEDIPALLY	Open Filed	125	BOTTLEGUARD & LADY	4 kg	SCHOOL'S OWN

						FINGER		INITIATIVE
360	Yadadri	BOMMALAR AMARAM	MPPS PYARARAM	Open Filed	100	CHILLIES, TOMATO & BRINJAL	3kg	SCHOOL'S OWN INITIATIVE
361	Yadadri	BOMMALAR AMARAM	MPPS SOLIPETA	Open Filed	80	LADY FINGER	2kg	SCHOOL'S OWN INITIATIVE
362	Yadadri	BOMMALAR AMARAM	MPPS FAKEER GUDEM	Open Filed	50	TOMATO	1kg	SCHOOL'S OWN INITIATIVE
363	Yadadri	BOMMALAR AMARAM	MPPS MEDIPALLY	Open Filed	100	CHILLIES & LADY FINGER	3kg	SCHOOL'S OWN INITIATIVE
364	Yadadri	BIBINAGAR	MPUPS.MAKTHA ANANTHARAM	Open Filed	300	LEAFY VEGITABLES & LADYS FINGERS	4kg	SCHOOL'S OWN INITIATIVE
365	Yadadri	RAJAPET	MPPS RAGHUNATHAPUR	Open Filed	150	BOTTLE GUARD	8KG	SCHOOL'S OWN INITIATIVE